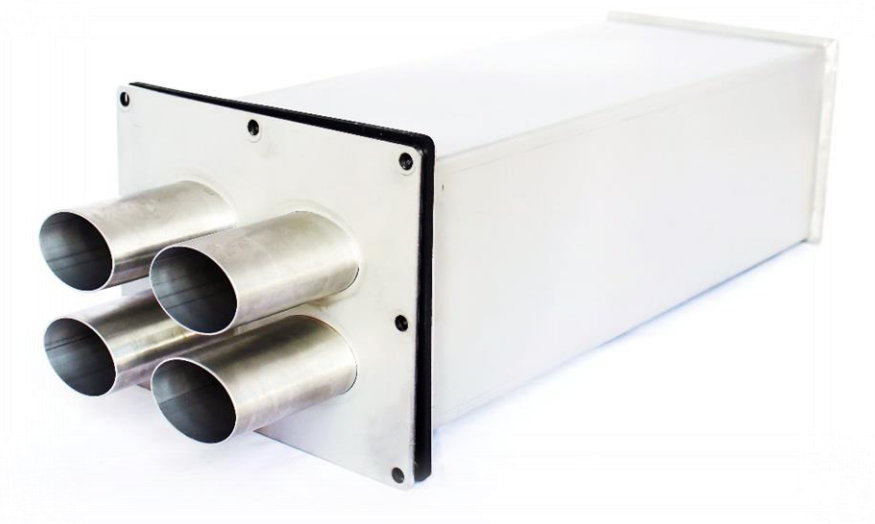


Nestor St Closure L 96-432F Mech



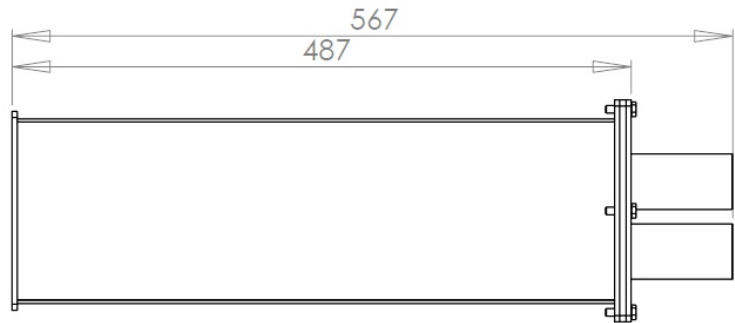
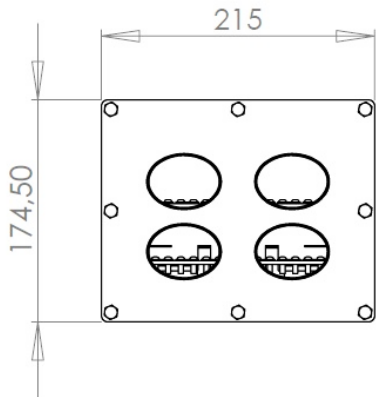
Features

- Designed for direct buried, pole and wall mount or manhole applications
- Capacity for 96 - 432 single fiber splices
- Four oval inlets with 55,6mm x 40,9mm inner dimensions
- Enables midspan access
- Capacity
 - 1 – 6 pcs NC-48S splice trays, 48 splices each.

1 – 4 pcs NC-96 splice trays, 96 splices each.

Full 432 fiber splice capacity is achieved by using
4 pcs NC-96 splice trays and 1 pc NC-48S splice tray

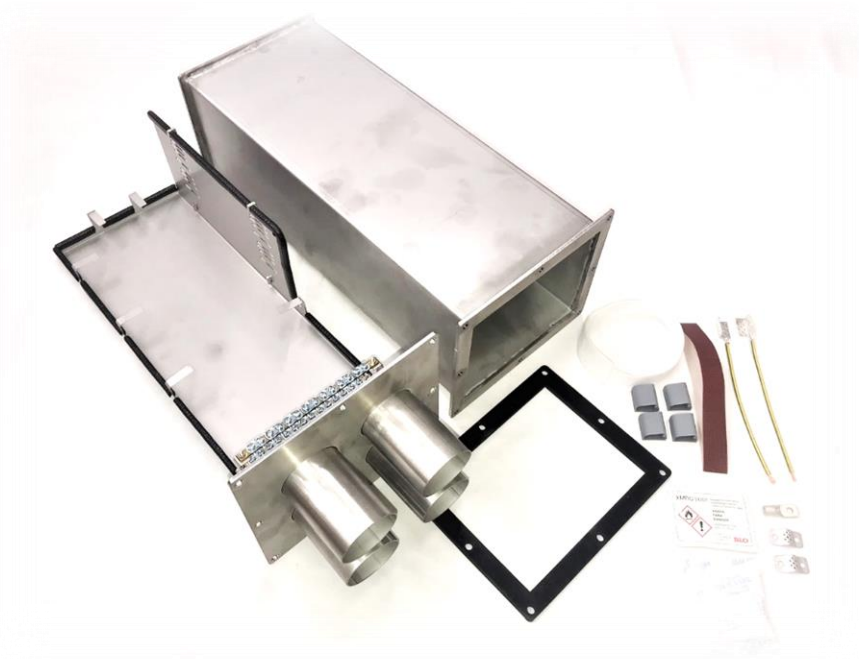
- Dimensions Length 567 mm, width 215 mm, height 174,5 mm
- Material Acid-proof stainless steel
- Tightness IP 67



Inner frame of the Nestor St Closure L 96-432F Mech.

Basic assembly

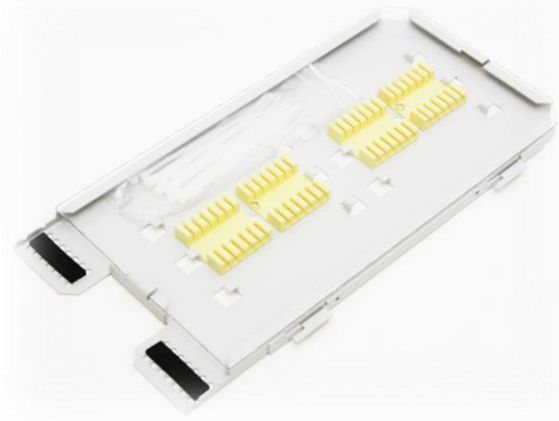
- Grounding clip for 16 mm² grounding wire
- Grounding wires
- Mounting and grounding bars for incoming cables
- Splice sleeves, 100 - 500 pcs
- Cable clips
- Velcro band
- Dehumidifier
- Sandpaper
- 1 – 6 pcs NC-48S splice trays or 1 – 4 pcs NC-96 splice trays according the amount of fiber splices. Splice trays are equipped with sleeve holders and cable ties.



Nestor St Closure L 96-432F Mech basic assembly.



NC96 Universal Splice tray.



NC-48S Universal Splice Tray.



LV1152 Splice Sleeve 45 mm & LV1153 Splice Sleeve 61 mm (100 pcs/bag)

Product codes

- LV2441 Jatkospkt. Nestor St Closure L 96F Mech *96 fiber splices*
- LV2442 Jatkospkt. Nestor St Closure L 192F Mech *192 fiber splices*
- LV2443 Jatkospkt. Nestor St Closure L 288F Mech *288 fiber splices*
- LV2502 Jatkospkt. Nestor St Closure L 384F Mech *384 fiber splices*
- LV2503 Jatkospkt. Nestor St Closure L 432F Mech *432 fiber splices*

Optional accessories

- LV2543 Nestor Mech Seal 6 x 10mm



- LV2544 Nestor Mech Seal 4 x 15mm



- LV2545 Nestor Mech Seal 2 x 18mm



- LV2546 Nestor Mech Seal 2 x 23mm



- LV2167 Pole and wall mount

