

Splice Cabinet Combination K1 + NC-320



Introduction

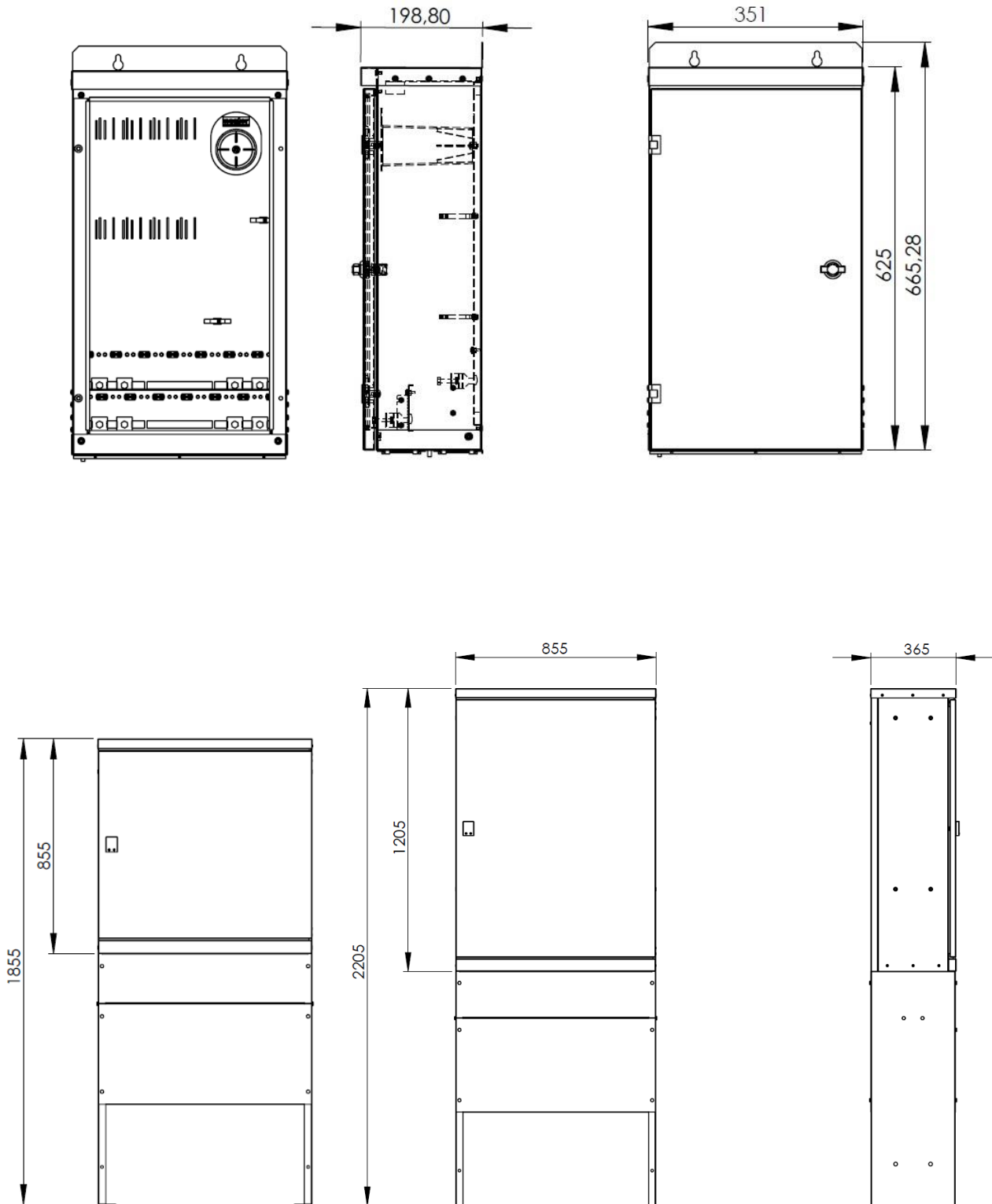
Splice cabinet combination K1 + NC-320 consists of a street distribution cabinet with an unheated splice cabinet mounted inside. The cabinet combination is used for connecting splice trays and connector panels inside the optical network.

Features

- Splice cabinet combination for outdoor use, which includes an outdoor cabinet with a stand and a splice cabinet
- The product has been designed especially for FTTH applications
- Basic assemblies
 - LV2005 Splice Cabinet Combination K1 + NC-320, 850mm
 - LV2387 K1 Street distribution cabinet with a stand, height 850 mm
 - LV1267 NC-320 Splice cabinet
 - LV1619 Splice Cabinet Combination K1 + NC-320, 1200mm
 - LV1334 K1 Street distribution cabinet with a stand, height 1200 mm
 - LV1267 NC-320 Splice cabinet
- The outer parts of the K1 cabinet are galvanized and powder-painted steel plate
 - Colour RAL 7008
- Splice cabinet NC-320 is made of galvanized steel plate
 - Unpainted
- Slots for splice trays
 - 12 pcs NC-48S splice tray for 48 fiber splices
 - 8 pcs NC-96 splice tray for 96 fiber splices
- Total capacity up to 768 fiber splices
- User-friendly and robust design
 - Dust-proof construction
 - NC-320 cabinet can be easily removed from the K1 cabinet during the installation work
 - The inlets of the NC-320 cabinet are wide and equipped with bristle sealings, so it is easy to bring cables inside the cabinet
 - Guiding system for thin-walled loose tubes
 - Mounting and grounding bars for incoming cables

Dimensions

- | | |
|-------------------------|---|
| • K1 cabinet | 850 or 1200 (H) x 850 (W) x 360 (D) mm |
| • K1 stand | 1000 (H) x 850 (W) x 360 (D) mm |
| • NC-320 splice cabinet | 625 (H) x 351 (W) x 199 (D) mm |
| • Full assembly | 1850 or 2200 (H) x 855 (W) x 365 (D) mm |



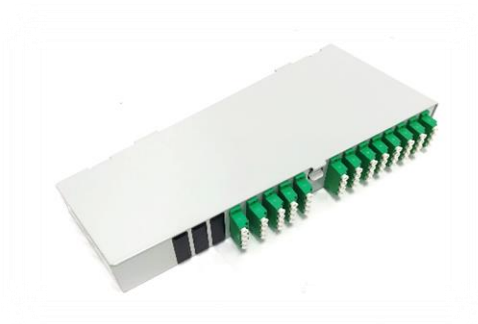
Optional accessories



LV1581 NC-48S Universal Splice Tray



LV2265 NC-96 Universal Splice Tray



LV2037 NC-320 Connector Panel