

# NYX 190

Design: Vilhelm Lauritzen Architects



The smallest luminaire in the Nyx family is Nyx 190 for wall or bollard mounting. As is the case with the other Nyx luminaires, Nyx 190 is available in black, two grey colours, and the new corten brown.

With housing in cast silumin and screen in opalized polycarbonate, the luminaires are simple and resistant to vandalism. The bollard is available in two heights; 1000 or 1200 mm, the taller bollard being equipped with fuse box.

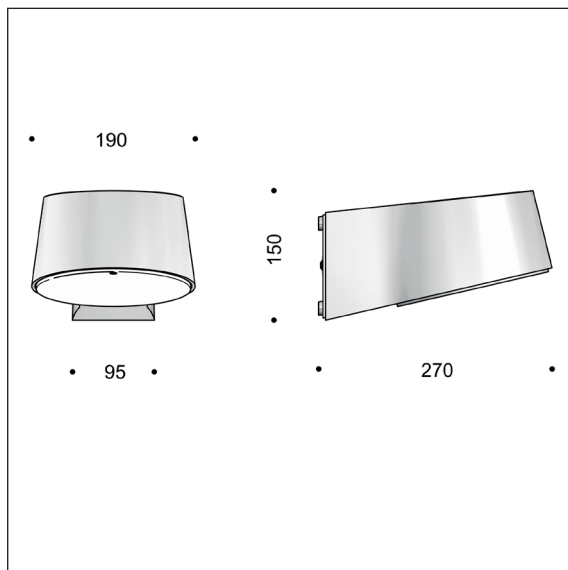
Lamp types are LED or E27 types.

In Greek mythology NYX is the goddess of the night, ruling over darkness - NYX gave birth to the day



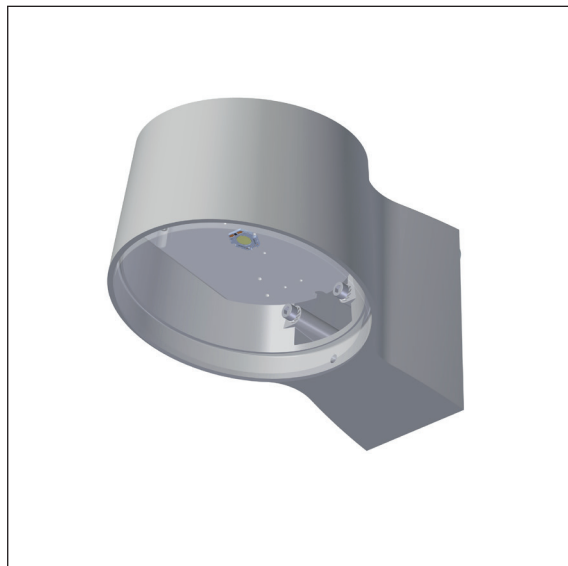
# NYX 190 WALL LED

Design: Vilhelm Lauritzen Architects



## Luminaire specification:

Material: cast aluminium  
 Coating: graphite grey: SW302G (close to RAL 9007)  
 silver grey: MW300D  
 black: RAL 9005  
 corten brown: Mars 2525 YX355F  
 Screen: polycarbonate, opal white  
 Mounting: on wall, double cable entry  
 Connection: max 5 x 2.5 mm<sup>2</sup> into terminal block  
 Classification: IP 66, class I or II  
 Impact resistance: IK10  
 Weight: 2.6 kg  
 Lamp types: LED or E27 variants.  
 All lamp components as exchangeable modules.



## Lamp and driver specification:

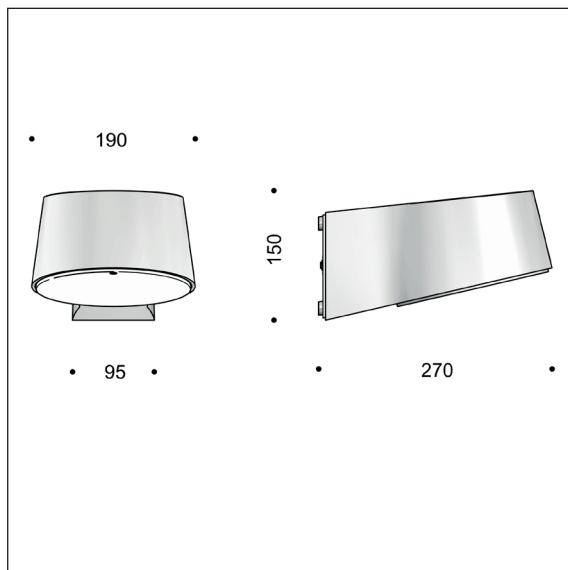
LED type: Bridgelux Vero 10  
 Energy consumption: 12 or 17 W (350 or 500 mA)  
 Operational life: min 100.000 hours at ta max 25°C, L80B10  
 Colour temperature: 2700, 3000, or 4000 Kelvin  
 Colour rendering: min 90 Ra  
 Colour accuracy: 3 Steps SDCM  
 Output ratio: 57 per cent  
 Driver: Helvar LED driver  
 Dimmable at extra charge  
 Operational life: min 50,000 hours

## Product codes:

NYX 190 for wall mounting, LED									
Item No.	Lamp type		Select colour, colour temperature, etc. in the table below.						
6843-	12 W Bridgelux Vero 10, 350 mA								
6844-	17 W Bridgelux Vero 10, 500 mA								
Combine with:	Colour		Colour temperature		Dimming		Classification		
	3	black	927	2700 K, 90 Ra	V	1-10 V	empty	class I	
	4	graphite grey	930	3000 K, 90 Ra	D	Dali	K	class II	
	9	silver grey	940	4000 K, 90 Ra					
	17	corten brown							
Example:	6843-9830 = Nyx 190 wall, 12 W Bridgelux, silver grey, 3000 K 80 Ra, without dimming, class I								
Optional									
60228	Base for visible cables - see sketch here								

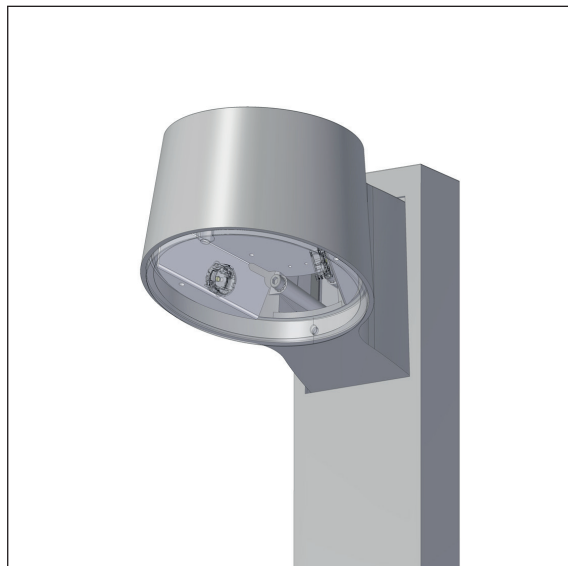
# NYX 190 LED FOR BOLLARD

Design: Vilhelm Lauritzen Architects



## Luminaire specification:

Material: cast aluminium  
 Coating: graphite grey: SW302G (close to RAL 9007)  
 silver grey: MW300D  
 black: RAL 9005  
 corten brown: Mars 2525 YX355F  
 Screen: polycarbonate, matt  
 Mounting: on bollard, double cable entry  
 Connection: max 5 x 2.5 mm<sup>2</sup> into terminal block  
 Classification: IP 66, class I or II  
 Impact resistance: IK10  
 Weight: 2.6 kg  
 Lamp types: LED or E27 variants.  
 All lamp components as exchangeable modules.



## Lamp and driver specification:

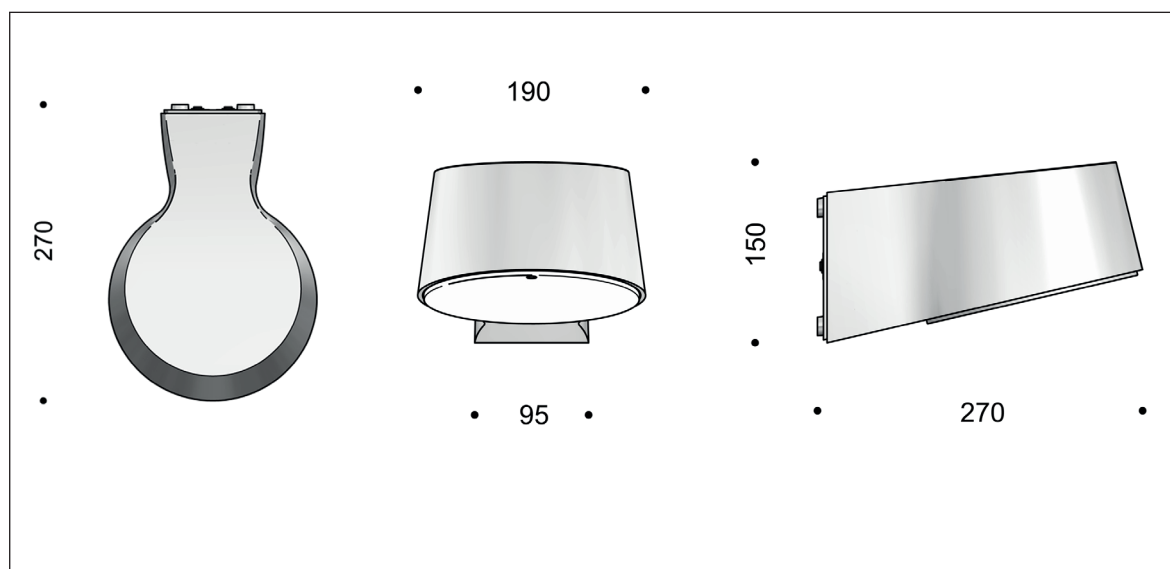
LED type: 2 X Bridgelux V6  
 Energy consumption: 9, 12, or 16 W  
 Operational life: min 100,000 hours at ta max 25°C, L80B10  
 Colour temperature: 2700, 3000, or 4000 Kelvin  
 Colour rendering: 2700/3000 K: min. 90 Ra, 4000 K: min. 80 Ra  
 Colour accuracy: 3 Steps SDCM  
 Output ratio: 60 per cent  
 Standard driver: Helvar coated LED driver, 350-700 mA  
 dimmable at extra charge  
 Operational life: min 50,000 hours  
 Programmable driver: Xitanium Full Xi FP 22 W, 0.3-1.0 A  
 Inrush current: max 14 A (50% after 400 µs)  
 Dimming: 15-100% i valgfri perioder  
 Surge protection: L/N-GND: 8 kV, L-N: 6 kV  
 Operational life: min 100,000 hours

## Product codes:

NYX 190 for bollard mounting, LED					
Item No.	Lamp type	Select colour, colour temperature, etc. in the table below.			
6841-	9 W Bridgelux V6				
6842-	12 W Bridgelux V6				
6888-	16 W Bridgelux V6				
To be combined with:	Colour	Colour temperature		Dimming	
	3 black	927	2700 K, 90 Ra	empty	no dimming
	4 graphite grey	930	3000 K, 90 Ra	V	1-10 V (Helvar driver)
	9 silver grey	840	4000 K, 80 Ra	D	Dali
	17 corten brown			E	programmable
Example product code:	6841-9930K = Nyx 190 for bollard, 9 W V6, silver grey, 3000 K 90 Ra, no dimming, class II				

# NYX 190 - E27 TYPES

Design: Vilhelm Lauritzen Architects



## Luminaire specification:

Material: cast aluminium  
 Coating: graphite grey: SW302G (close to RAL 9007)  
 silver grey: MW300D  
 black: RAL 9005  
 corten brown: Mars 2525 YX355F  
 Screen: polycarbonate, opal white  
 Mounting: on wall, double cable entry  
 Connection: max 5 x 2.5 mm<sup>2</sup> into terminal block  
 Classification: IP 66, class I or II  
 Impact resistance: IK10  
 Weight: 2.6 kg  
 Lamp types: E27 types  
 All lamp components as exchangeable modules..

## NYX 190 E27

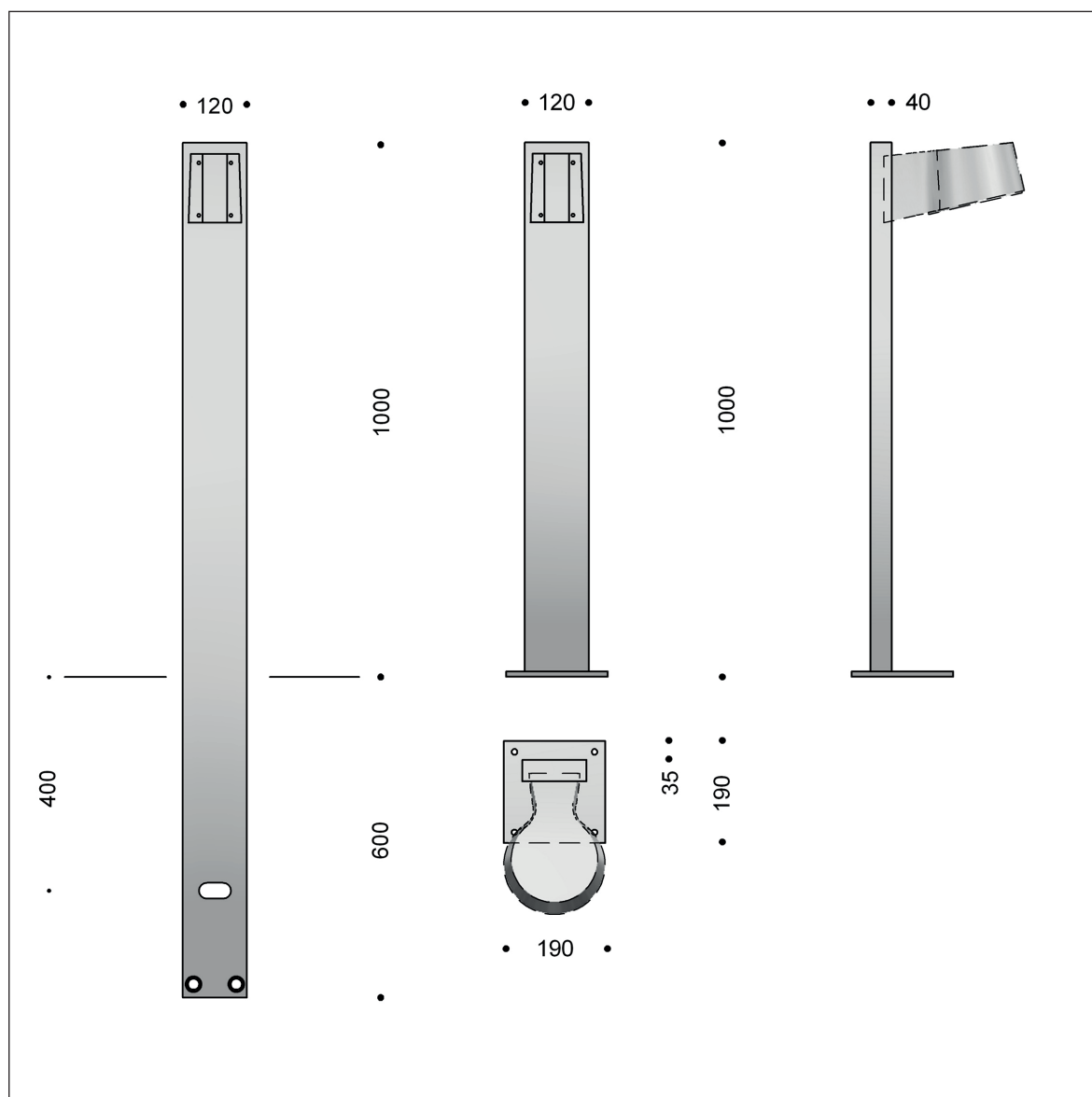
Lamp type: max 57 W, max length/diameter: 130/58 mm  
 We recommend Deco Aurora LED, 7.5 W

## Product codes:

Item No.	E27 variants			
6022-	max 57 W			
<b>To be combined with:</b>	<b>Colour</b>			
	3 black			
	4 graphite grey			
	9 silver grey			
	17 corten brown			
Examples of product codes:	6022-3 = Nyx 190 E27, black, class I			
<b>Optional</b>				
1100-6	A60 Deco Aurora LED dimmable, 7.5 W, 2700 K, 80 Ra, 20,000 hours operation			
60228	Base for visible cables - see sketch here			

# NYX BOLLARD 1000

Design: Vilhelm Lauritzen Architects



## Specification:

Material:	powder-coated aluminium
Coating:	graphite grey: SW302G (close to RAL 9007), silver grey: MW300D, black: RAL 9005, corten brown: Mars 2525 YX355F
Mounting:	with rooted base for embedment or on flanged base; cables in the stand
Connection:	in the fixture
Weight:	4-5 kg

## Product codes:

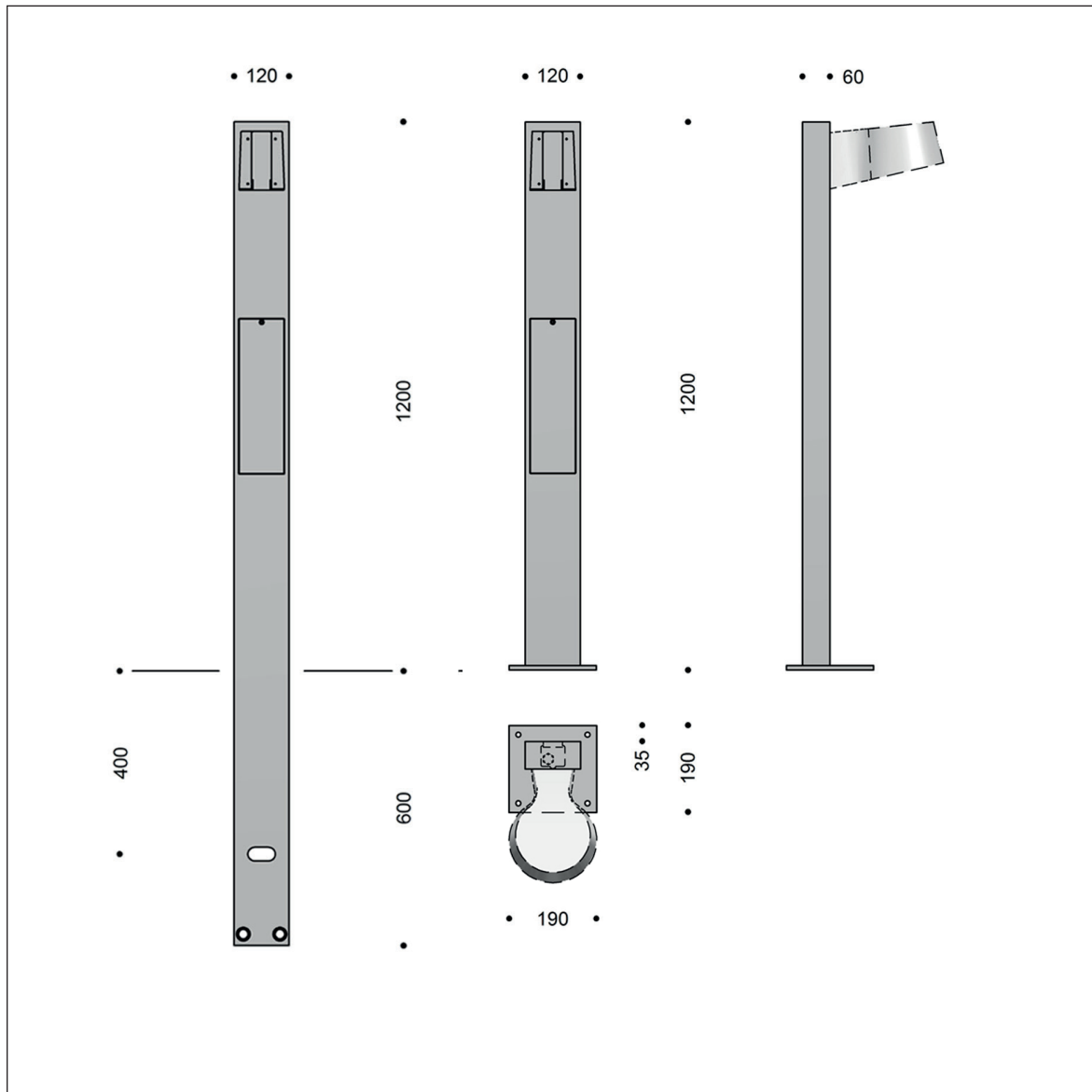
Item No.	Height: 1000 mm	Select colour in the table below.			
7021-	rooted base for embedment				
7022-	on flanged base				
To be combined with:	Colour				
	3 black				
	4 graphite grey				
	9 silver grey				
	17 corten brown				
Example product code: 7021-4 = Nyx bollard 1000 for embedment, graphite grey,					

Find our sales partner in your country under Contacts at [www.focus-lighting.dk](http://www.focus-lighting.dk)

FOCUS-LIGHTING

# NYX BOLLARD 1200

Design: Vilhelm Lauritzen Architects



## Specification:

Material:	powder-coated aluminium
Coating:	graphite grey: SW302G (close to RAL 9007), silver grey: MW300D, black: RAL 9005, corten brown: Mars 2525 YX355F
Mounting:	with rooted base for embedment or on flanged base
Connection:	in fuse box with <u>4A OCP, max 2 of 4 x 16 mm<sup>2</sup></u>
Classification:	class I or II
Weight:	4.5-6 kg

## Product codes:

Item No.	Height: 1200 mm	Select colour and protection below.			
7023-	rooted base for embedment				
7024-	on flanged base				
To be combined with:	Colour	Classification			
	3 black	empty	class I		
	4 graphite grey	K	class II		
	9 silver grey				
	17 corten brown				
Example product code: 7023-4K = Nyx bollard 1200 for embedment, graphite grey, class II					

Find our sales partner in your country under Contacts at [www.focus-lighting.dk](http://www.focus-lighting.dk)

**FOCUS-LIGHTING**