

Thermostat Code: **17258 - FL258Z**

Description: **Thermostat normally closed**

### MECHANICAL SPECIFICATIONS

Type of control: **Temperature sensing control.**  
**Contact open on rise to control heaters**

Temperature sensing element: **Bi-metallic**

Degree of protection by enclosure: **IP20**

Electrical connection: **2 screw terminals for 2 conductors size: from 0.75mm<sup>2</sup> to 2.5mm<sup>2</sup>**

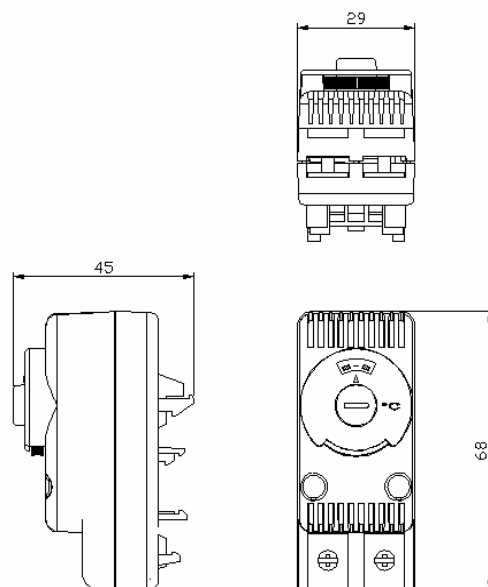
Method of mounting: **Snap-on fixing on profile rail.**  
*(In addition, the user can choose to fix the thermostat on rail with the 2 screws included in the kit)*

Enclosure material: **Plastic UL94V-0. Standard colour is grey RAL 7032**

External dimensions: **68x29x45mm**

Weight: **48g**

### DRAWING [mm]



### OPERATING FEATURES and APPROVALS

Setting temperature range: **From -10°C to +80°C**

Differential (referred to set point): **- 3 °K**

Manufacturing deviation: **± 3 °K**

Rated voltage range: **110 – 250 Va.c.**

Type of load / Max rated current: **Resistive load / 10 A**

Contact current carrying capacity: **15 A**

Endurance: **> 100,000 cycles**

Applicable standard: **EN 60730-1**

Approvals: **CE**

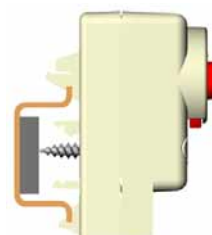
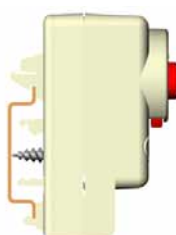
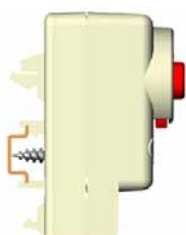
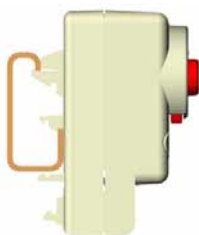
### METHOD OF MOUNTING

rail 32x15mm  
DIN 46 277/1  
EN 50 035

rail 15x5,5mm  
DIN 46 277/2  
EN 50 045

rail 35x7,5mm  
DIN 46 277/3  
EN 50 022

rail 35x15mm  
DIN 46 277/3  
EN 50 022



All specifications, data and drawings are subject to change without notice and are approximate.

CST-A02/2