

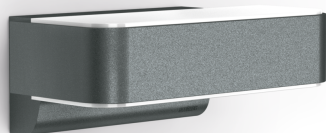
Sensor-switched LED outdoor light

L 810 S

V2 Anthracite

EAN 4007841 009847

Article number 009847



Up-/Downlight

LED

30 years (Ø 4,5h / day)

3000 K

3000K warm-white



intelligent high frequency sensor 160°



1 - 5 m



IP44



2 - 1000 lux



Light source not exchangeable



Control gear not exchangeable



5 sec - 15 min

Function description

The most modern outdoor light in the world. Designer sensor-switched outdoor light L 810 S with invisible high-frequency sensor, ideal for building entrances and fronts of buildings, 9,8 W STEINEL LED lighting system, 679 lm, 160° coverage angle, reach from 1 - 5 m, for stylish up and downlighting, includes soft light start and optional manual override for 4 hours.

Technical specifications

Dimensions (L x W x H)	145 x 230 x 91 mm
With lamp	Yes, LED lamp
Manufacturer's Warranty	3 years
Settings via	Potentiometers
With remote control	No
Version	Anthracite
PU1, EAN	4007841009847
Application, place	Outdoors
Application, room	garden, front door, courtyard & driveway, all round the building, terrace / balcony
Colour	Anthracite
includes sheet of self-adhesive numbers	No
Installation site	wall
Impact resistance	IK03
IP-rating	IP44
Protection class	II

Reach, radial	r = 5 m (35 m ²)
Reach, tangential	r = 5 m (35 m ²)
Photo-cell controller	Yes
Transmitter power	< 1 mW
Luminous flux total product	679 lm
Measured luminous flux (360°)	679 lm
Total product efficiency	69 lm/W
Colour temperature	3000 K
Lamp	LED cannot be replaced
Service life LED L70B50 (25°)	> 60000 h
Base	without
LED cooling system	Active and Passive Thermo Control
Soft light start	Yes
Continuous light	selectable, 4h
Functions	Motions sensor
Twilight setting	2 – 2000 lx
Time setting	5 s – 15 Min.

<https://www.steinel.de>

Subject to technical modifications

01.2023 Page 1 from 2

L 810 S

V2 Anthracite

EAN 4007841 009847

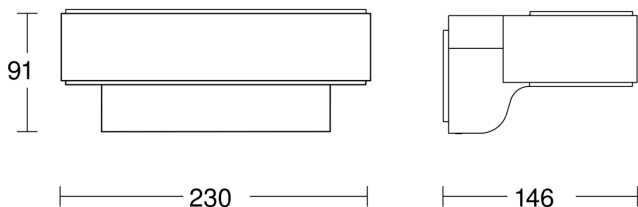
Article number 009847

Technical specifications

Ambient temperature	-20 – 40 °C
Housing material	Aluminium
Cover material	Plastic, opal
Mains power supply	220 – 240 V / 50 – 60 Hz
Output	9,8 W
Mounting height max.	2,50 m
Slave modeselectable	Yes
Sneak-by guard	Yes
Capability of masking out individual segments	No
Electronic scalability	Yes
Mechanical scalability	No

Basic light level function	Yes
Basic light level function time	10/30 min, all night
Interconnection	No
Basic light level function in per cent	10 %
Basic light level function percentage, from	10 %
Basic light level function percentage, up to	10 %
Colour Rendering Index CRI	= 82
Optimum mounting height	2 m

Dimension Drawing



Circuit diagram

