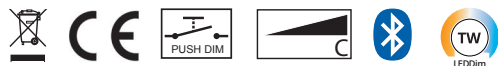
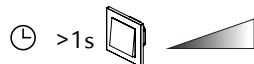
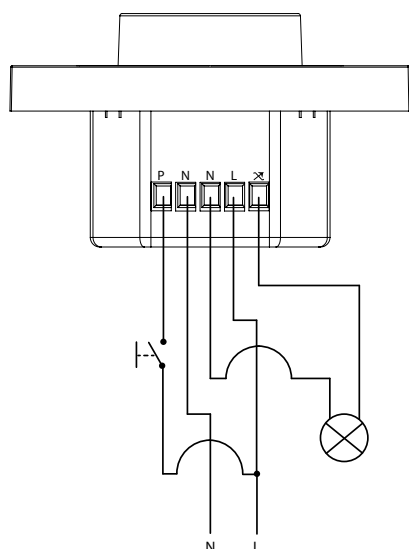
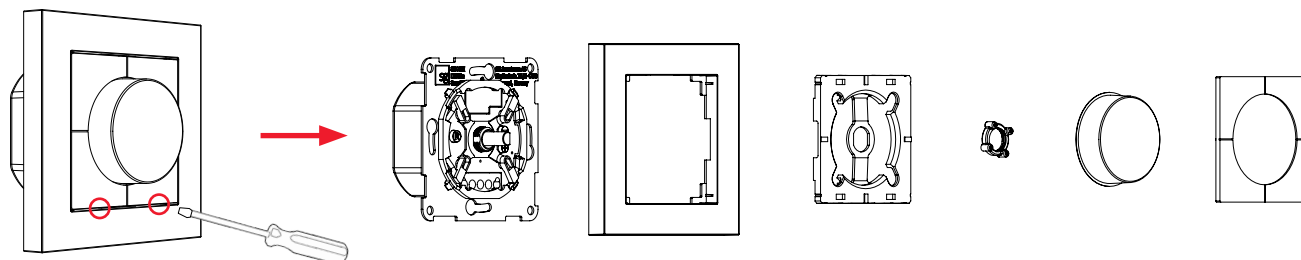


# TW LEDDim Smart

DIGITAL TRAILING EDGE DIMMER

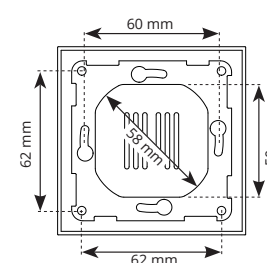
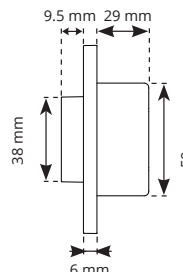
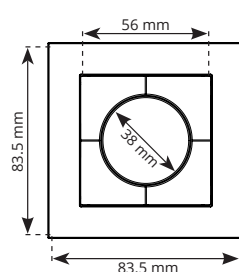
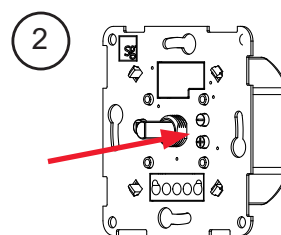
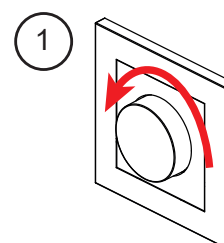
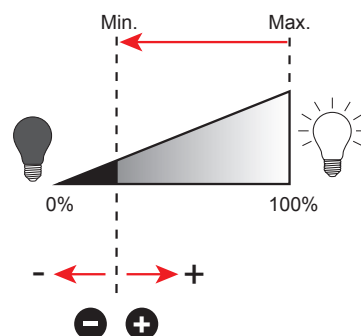


220-240V, 50/60Hz, 3-400VA, -20°C to 35°C



EN: Push button (optional)  
FR: Bouton-poussoir (optionnel)  
DE: Druckknopf (optional)

NO: Minimum dimmenivåjustering  
EN: Minimum dimming level adjustment  
FR: Réglage du niveau de gradation minimal  
NL: Regelbaar niveau van minimale dimmingsgraad  
DE: Anpassung der minimalen Dimmstufe  
FI: Minimi himmennystaso



Rev: 22.05.2019

**NORWAY** SG Armaturen AS  
Skytterheia 25  
N-4790 Lillesand  
Tel: +47 37 50 03 00  
firmapost@sg-as.no  
www.sg-as.no

**SWEDEN** SG Armaturen AB  
Tel: +46 31 81 71 10  
info@sg-ab.se  
www.sg-ab.se

**FRANCE** SG Lighting SA/NV  
Tel: +33(0) 4 94 93 00 00  
info.france@sglighting.fr  
www.sglighting.net

**GERMANY** SG Leuchten GmbH  
Tel: +49 40 23 99 44 59  
info@sg-leuchten.de  
www.sg-leuchten.de

**FINLAND** SG Armaturen Oy  
info@sg-oy.fi  
www.sg-oy.fi

**DENMARK** SG Armaturen A/S  
Tel: +45 70 70 72 13  
info@sg-as.dk  
www.sg-as.dk

**BENELUX** SG Lighting SA/NV  
Tel: +32(0) 15 20 72 71  
info.benelux@sglighting.net  
www.sglighting.net

**INTERNATIONAL** SG Lighting Co Ltd.  
Tel: +86 769 88 49 20 88  
cindy@sgdgc.com  
www.sg-as.com

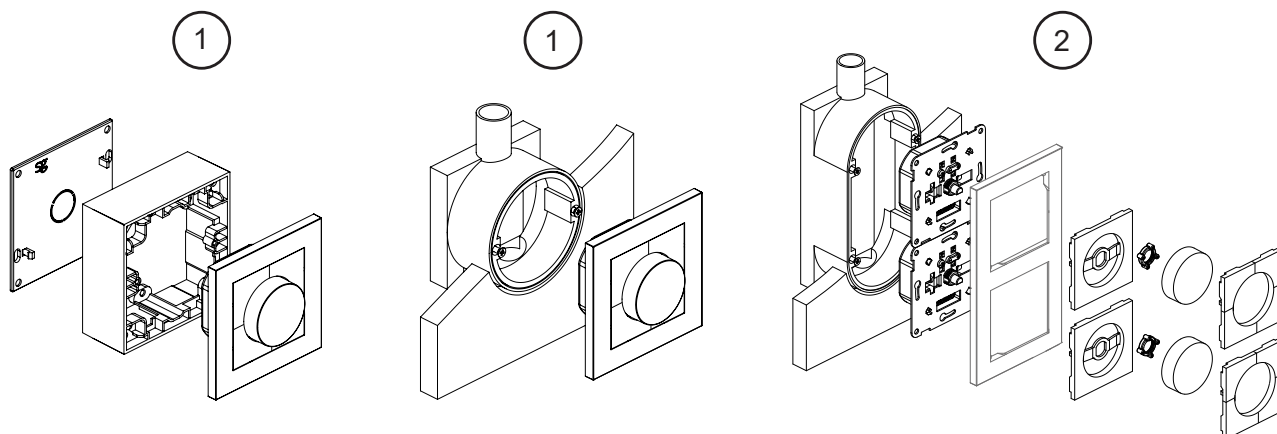


**NO:** Kan kun installeres av en registrert installasjonsvirksomhet.  
**EN:** Only to be installed by an authorized electrician.  
**FR:** Doit être installé par un électricien autorisé.  
**NL:** Mag alleen geïnstalleerd worden door een bevoegde elektricien.  
**DE:** Dieses Produkt darf nur durch autorisiertes Personal (z. B. Elektro-Installateur) angeschlossen und in Betrieb genommen werden.  
**FI:** Asentaa saa vain valtuutettu sähköasentaja



**NO:** Skru av strømmen før montering.  
**EN:** Turn off power before installing.  
**FR:** Couper le courant avant l'installation.  
**NL:** Stroom uitschakelen voor u het toestel installeert.  
**DE:** Vor Installationsarbeiten den Strom abschalten.  
**FI:** Sammuta virta ennen kytkemistä

Max. load / Charge maximale / Maximale Belastung

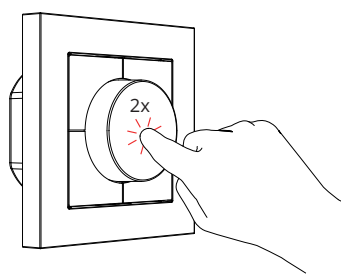


1	✗	Max. 320W	✗
2	✗	Max. 240W/pc.	✗

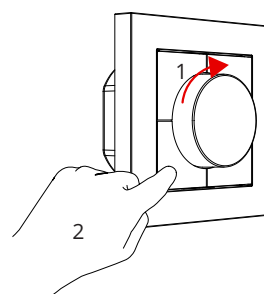
Works exclusively with



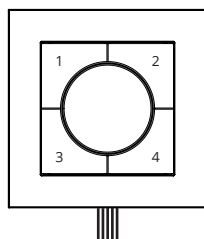
Mode



Save settings

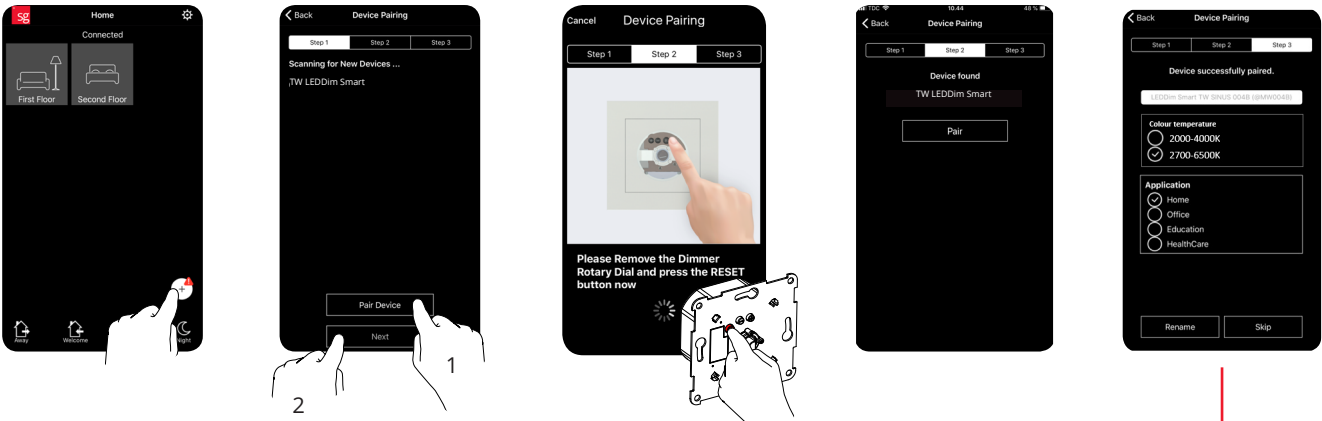


Default scenario

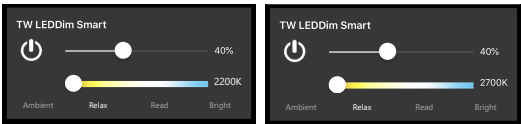


	2700-6500K	2000-4000K	
1	2700K	2000K	40%
2	3000K	2200K	60%
3	4000K	2700K	80%
4	6500K	4000K	100%

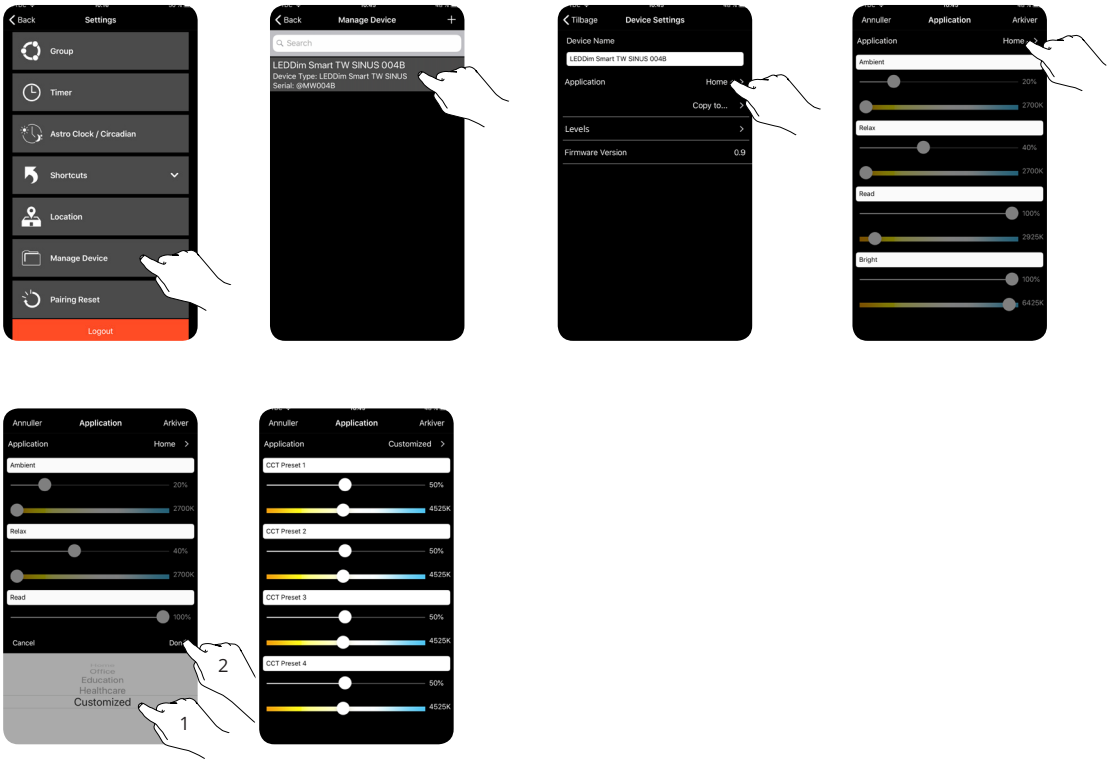
Pairing



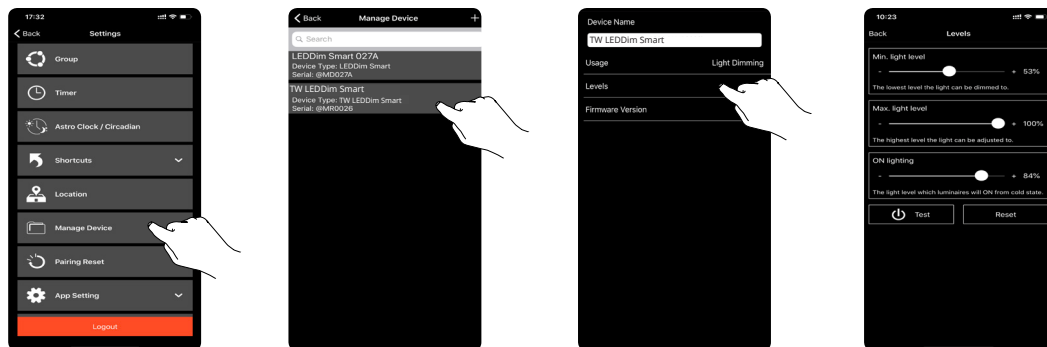
2000-4000K			Home			Education			Office			Healthcare		
Ambient	2000K	20%	Ambient	2700K	20%	Relax	3000K	50%	Presentation	3000K	30%	Relax	3000K	50%
Relax	2200K	40%	Relax	2700K	40%	Dialogue	4000K	70%	Dialogue	4000K	70%	Dialogue	4000K	70%
Read	2700K	100%	Read	3000K	100%	Concentration	4525K	100%	Concentration	4525K	100%	Concentration	4525K	100%
Bright	4000K	100%	Bright	4000K	100%	Energy	6500K	100%	Energy	6500K	100%	Energy	6500K	100%



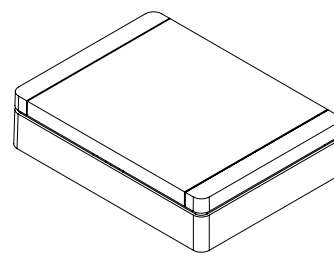
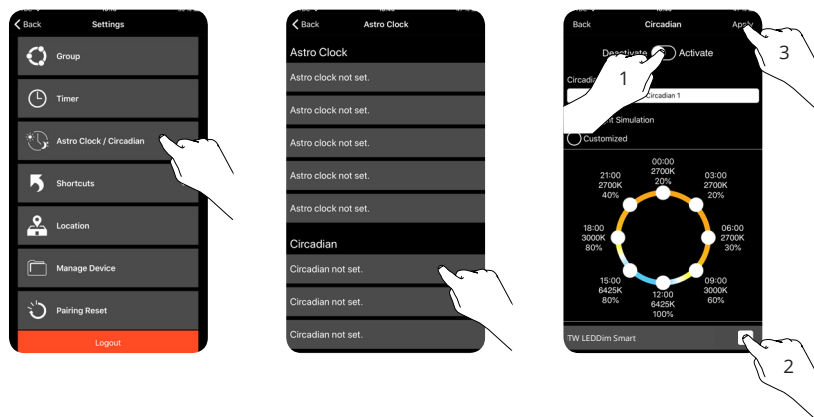
Customise preset



## Levels



## Circadian



Use with SG Smart Gateway  
SG article number: 820370

## Circadian Customized

