

3D Model is the Master Document of Record
Article or Material Must Conform to REACH Procedure S19000000 Sec.14
Article or Material Must Conform to ROHS Procedure S19000000 Sec.13
Part Must Conform to S19000000 Sec.4 Toxicity Procedure
Geometric Dimensioning & Tolerancing as per ASME Y14.5-2009

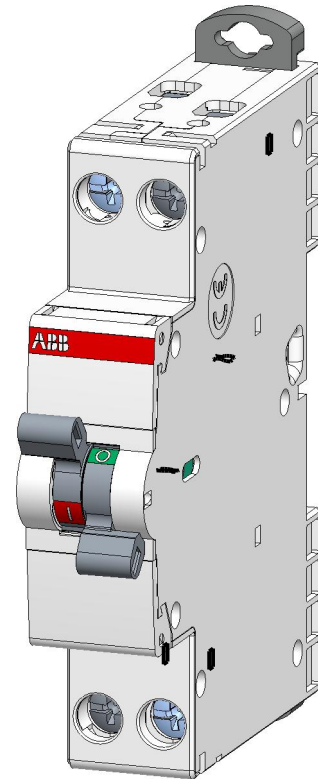
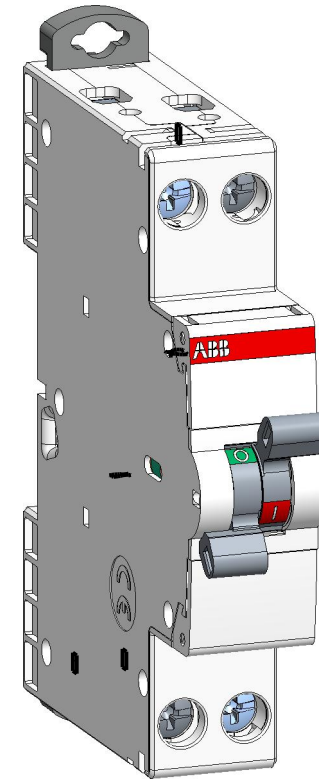
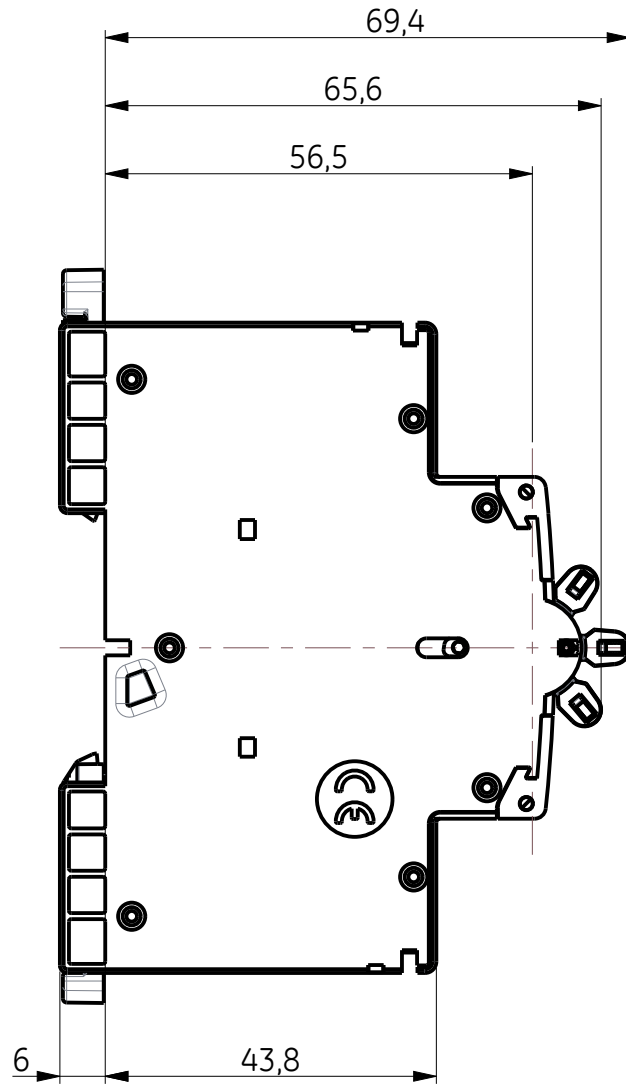
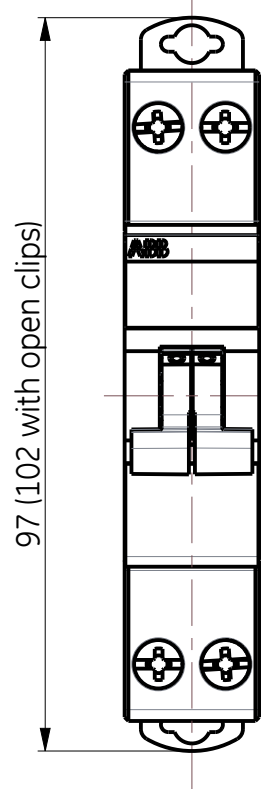
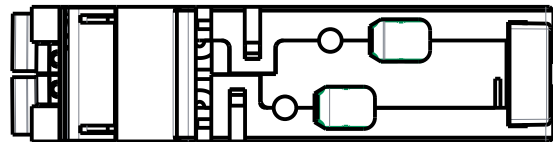
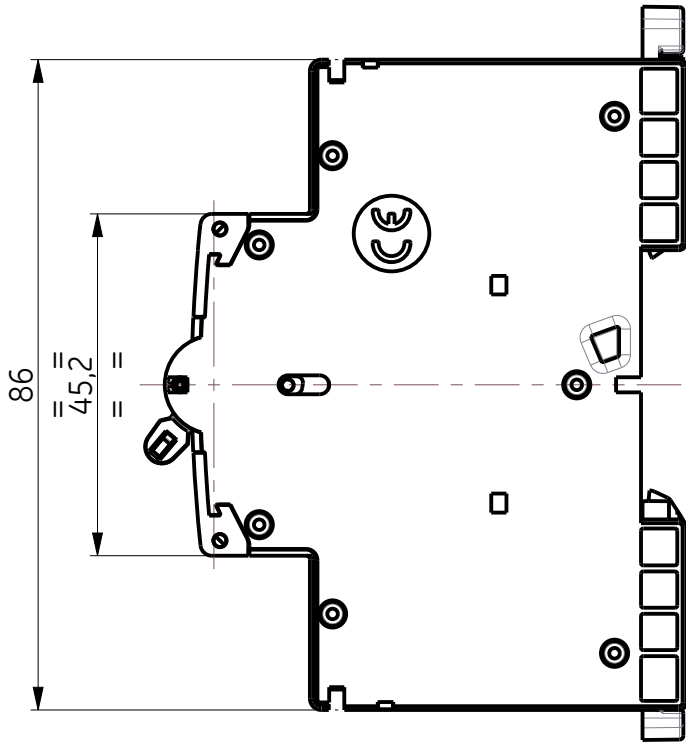
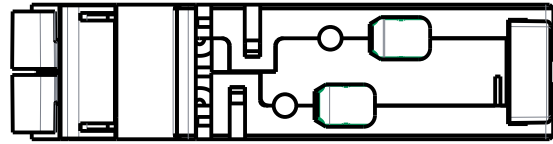
ABB PROPRIETARY AND CONFIDENTIAL INFORMATION
The information contained in the document has to be kept strictly confidential.
Any unauthorized use, reproduction, distribution or disclosure to third parties is strictly forbidden.
ABB reserves all rights regarding intellectual Property Rights.
Copyright 2018 ABB. All rights reserved

A

B

C

D



First Angle Projection



Calculated for: VOLUME	DRAWING FILE 2300280182A	MODEL FILE 2300280182A	ABB			
	DATE MODIFIED 13-Jun-19 01:15:09 PM	DESIGNED BY J.C.Rodríguez				
	CN# CN: C065085	APPROVED BY C065085	TITLE ABB-S202C M 2-TOGGLES (Assembly)			
MASS	MATERIAL SPECIFICATION	FINISH SPECIFICATION	UNITS	LOCAL TITLE ABB-S202C M 2-TOGGLES (Assembly)		
UNLESS OTHERWISE SPECIFIED Linear and Geometry Tolerance: ISO 2768-mK Angular Tolerances: ISO 2768-c	MATERIAL DESCRIPTION		SIZE A3	ROOT NUMBER 2300280182A	REV 1	RELEASE STATE En curso
	FINISH DESCRIPTION		SCALE 1:1	PRODUCT LINE MCB-UNIBIS-MCB		SHEET 1 of 1