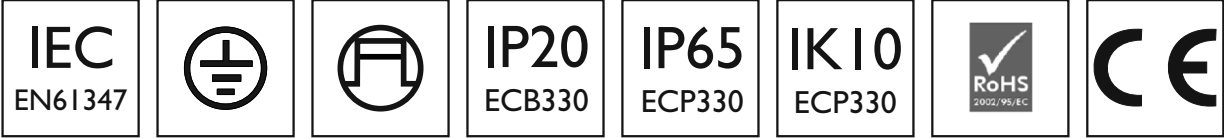


Philips GearUnits ECB330/ECP330

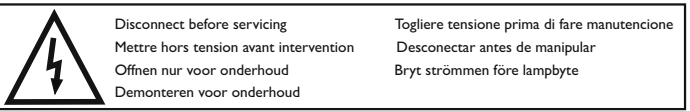
Mounting instructions

Instructions de montage Instrucciones de montaje Kokoonpano- ja kiinnitysohjeet Návod k montáži
Montageanleitung Instruções de montagem Montaj yönergeleri Szerelési utasítások
Montage instructie Monteringsinstruktioner Szerelési utasítások Instrukcja montażu



| | | | | | | | | | | | | | | | |
|--------|-----------------|------------------|------|-----|------------------|----|------------------|-------------------|------------------|------------------|------|-----------|----------------|----------------|----------------|
| ECB330 | 2 x HPI-TP 400W | 230/240V | 12 | -30 | n/a ¹ | 45 | n/a ¹ | 986 ² | 4,3 ² | 7,8 ² | 3,8 | 2 x gG8A | - | - | x ⁶ |
| | 2 x SON-T 400W | 230/240V | 12 | -30 | n/a ¹ | 45 | n/a ¹ | 878 ² | 4,4 ² | 7,2 ² | 4,5 | 2 x gG8A | x | x ⁵ | - |
| | 2 x SON-T 600W | 230/240V | 13 | -30 | n/a ¹ | 45 | n/a ¹ | 1284 ² | 6,2 ² | 9,8 ² | 5,8 | 2 x gG16A | x | - | - |
| | 2 x SON-T 600W | 230V | 13 | -30 | n/a ¹ | 45 | n/a ¹ | 1284 ² | 6,2 ² | 9,8 ² | 5,8 | 2 x gG16A | - | x ⁵ | - |
| | 2 x SON-T 600W | 240V | 13 | -30 | n/a ¹ | 45 | n/a ¹ | 1284 ² | 6,2 ² | 9,8 ² | 5,8 | 2 x gG16A | - | x ⁵ | - |
| | HPI-TP 1000W | 230/240V | 15 | -30 | n/a ¹ | 45 | n/a ¹ | 1051 | 5,3 | 8,7 | 8,25 | gG16A | - | - | x ⁶ |
| | HPI-TP 2000W | 380/400/415V | 19,5 | -30 | n/a ¹ | 45 | n/a ¹ | 2059 | 6,0 | 10,9 | 9,1 | gG16A | - | - | x ⁶ |
| | MHN-FC 1000W | 230/240V | 16 | -30 | n/a ¹ | 45 | n/a ¹ | 1110 | 6,0 | 8,0 | 8,9 | gG16A | x | - | - |
| | MHN-FC 2000W | 360/380/400/415V | 20,5 | -30 | n/a ¹ | 45 | n/a ¹ | 2158 | 5,3 | 8,2 | 9,6 | gG16A | x | - | - |
| | MHN-LA 1000W | 230/240V | 16 | -30 | n/a ¹ | 45 | n/a ¹ | 1110 | 6,0 | 8,0 | 9,3 | gG16A | x ⁷ | - | - |
| ECP330 | MHN-LA 2000W | 360/380/400/415V | 20,5 | -30 | n/a ¹ | 45 | n/a ¹ | 2166 | 5,3 | 8,2 | 9,6 | gG16A | x | - | - |
| | MHN-SE 2000W | 380/400/415/430V | 22 | -30 | n/a ¹ | 45 | n/a ¹ | 2120 | 5,9 | 8,0 | 11,6 | gG16A | x ⁷ | - | - |
| | SON-T 1000W | 230/240V | 16 | -30 | n/a ¹ | 45 | n/a ¹ | 1075 | 5,4 | 7,3 | 10,3 | gG16A | x | x ⁵ | - |
| | SON-T 600W | 230/240V | 7,5 | -30 | n/a ¹ | 45 | n/a ¹ | 642 | 3,1 | 4,9 | 5,8 | gG8A | x | - | - |
| | SON-T 600W | 230V | 7,5 | -30 | n/a ¹ | 45 | n/a ¹ | 642 | 3,1 | 4,9 | 5,8 | gG8A | - | x ⁵ | - |
| | SON-T 600W | 240V | 7,5 | -30 | n/a ¹ | 45 | n/a ¹ | 642 | 3,1 | 4,9 | 5,8 | gG8A | - | x ⁵ | - |
| | 2 x HPI-TP 400W | 230/240V | 18 | -30 | -30 | 45 | 55 | 986 ² | 4,3 ² | 7,8 ² | 3,8 | 2 x gG8A | - | - | x ⁶ |
| | 2 x SON-T 400W | 230/240V | 18 | -30 | -30 | 45 | 55 | 878 ² | 4,4 ² | 7,2 ² | 4,5 | 2 x gG8A | x | x ⁵ | - |
| | 2 x SON-T 600W | 230/240V | 19 | -30 | -30 | 45 | 55 | 1284 ² | 6,2 ² | 9,8 ² | 5,8 | 2 x gG16A | x | - | - |
| | 2 x SON-T 600W | 230V | 19 | -30 | -30 | 45 | 55 | 1284 ² | 6,2 ² | 9,8 ² | 5,8 | 2 x gG16A | - | x ⁵ | - |
| | 2 x SON-T 600W | 240V | 19 | -30 | -30 | 45 | 55 | 1284 ² | 6,2 ² | 9,8 ² | 5,8 | 2 x gG16A | - | x ⁵ | - |
| | HPI-TP 1000W | 230/240V | 19 | -30 | -30 | 45 | 55 | 1051 | 5,3 | 8,7 | 8,25 | gG16A | - | - | x ⁶ |
| | HPI-TP 2000W | 380/400/415V | 24 | -30 | -30 | 45 | 55 | 2059 | 6,0 | 10,9 | 9,1 | gG16A | - | - | x ⁶ |
| | MHN-FC 1000W | 230/240V | 20,5 | -30 | -30 | 45 | 55 | 1110 | 6,0 | 8,0 | 8,9 | gG16A | x | - | - |
| | MHN-FC 2000W | 360/380/400/415V | 25 | -30 | -30 | 45 | 55 | 2158 | 5,3 | 8,2 | 9,6 | gG16A | x | - | - |
| | MHN-LA 1000W | 230/240V | 20,5 | -30 | -30 | 45 | 55 | 1110 | 6,0 | 8,0 | 9,3 | gG16A | x ⁷ | - | - |
| | MHN-LA 2000W | 360/380/400/415V | 25 | -30 | -30 | 45 | 55 | 2166 | 5,3 | 8,2 | 9,6 | gG16A | x | - | - |
| | MHN-SE 2000W | 380/400/415/430V | 26,5 | -30 | -30 | 45 | 55 | 2120 | 5,9 | 8,0 | 11,6 | gG16A | x ⁷ | - | - |
| | SON-T 1000W | 230/240V | 20,5 | -30 | -30 | 45 | 55 | 1075 | 5,4 | 7,3 | 10,3 | gG16A | x | x ⁵ | - |
| | SON-T 600W | 230V | 12 | -30 | -30 | 45 | 55 | 642 | 3,1 | 4,9 | 5,8 | gG8A | x | - | - |
| | SON-T 600W | 230V | 12 | -30 | -30 | 45 | 55 | 642 | 3,1 | 4,9 | 5,8 | gG8A | - | x ⁵ | - |
| | SON-T 600W | 240V | 12 | -30 | -30 | 45 | 55 | 642 | 3,1 | 4,9 | 5,8 | gG8A | - | x ⁵ | - |

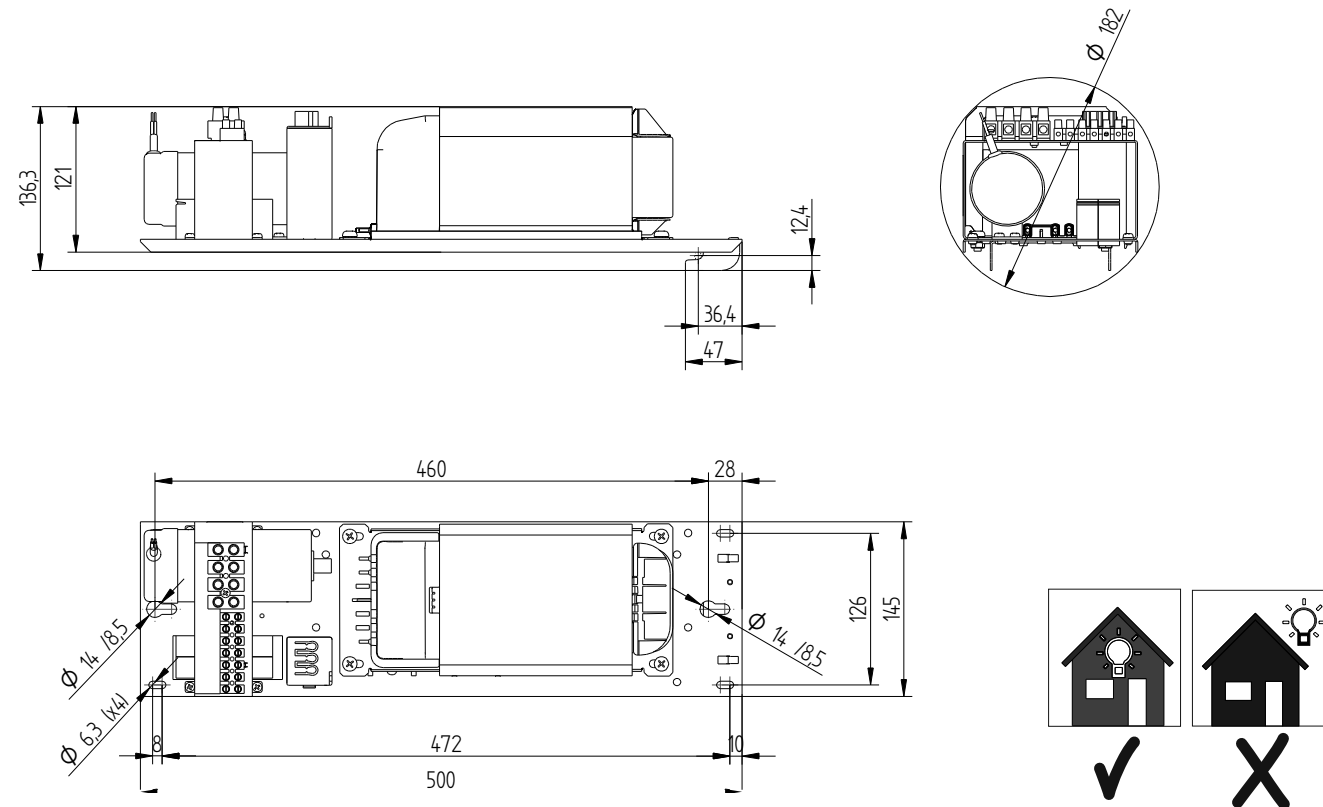
1. Not applicable for outdoor use.
2. Value for two systems in total.
3. Ignitor on the luminaire, not on the gear unit. No limitation of distance between lamp-gear unit.
4. Ignitor on the gear unit.
5. Distance between lamp-gear unit limited to 10m for SON-T 400/600W and 26m for SON-T 1000W.
6. Distance between lamp-gear unit limited to 1500m for HPI-TP 400W, 350m for HPI-TP 1000W and 1200m for HPI-TP 2000W.
7. Gear unit suitable also for floodlights equipped with electronic hot restrike ignitor (HRE).
8. Fuse optional, applies as 1-phase protection for 230/240V versions and 2-phase protection for 360-430V versions.
9. Lamp currents are approximate data. For exact data refer to the lamp data sheet.



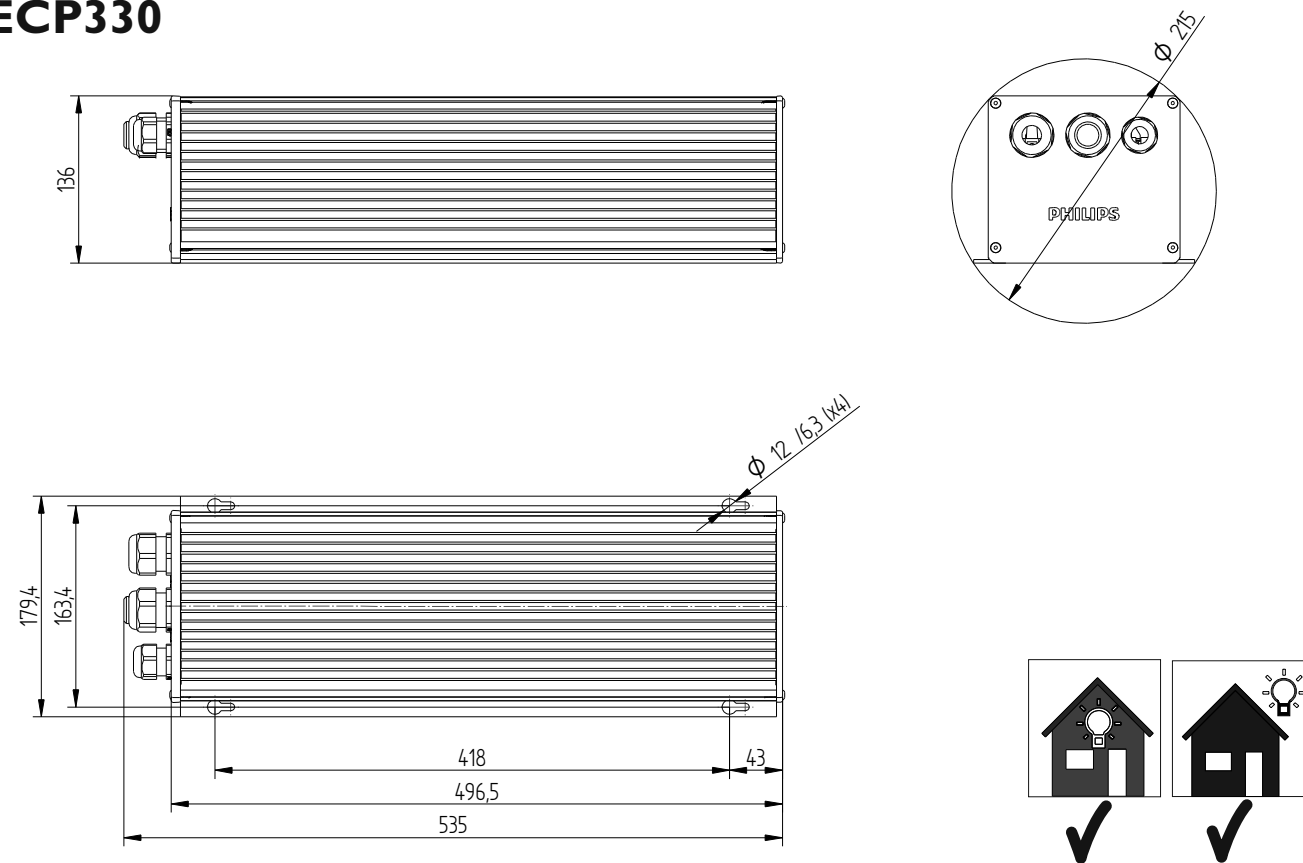
- GB** Total light output is directly dependant on Gear Unit main voltage. Use the correct ballast tap according the actual main voltage.
F Le flux lumineux de la lampe est directement dépendant de la tension d'alimentation de la platine. Sélectionner la prise ballast en fonction de la tension d'alimentation.
D Der abgegebene Lichtstrom hängt von der anliegenden Netzspannung ab. Klemmenanschluss am Vorschaltgerät entsprechend der anliegenden Netzspannung.
NL De totale licht opbrengst is direct afhankelijk van het voltage van de platine. Gebruik de juiste tap van de ballast afhankelijk van de net spanning.

- I** Il flusso della lampada è direttamente legato a la tensione d'alimentazione della unità elettrica. Utilizzare il collegamento a la tensione d'alimentazione giusta.
E El flujo de la lampara depende del voltage de alimentación. Utilize la conexión correcta según el voltage de alimentación.
S Ljussflödet är beroende på reaktorns driftspänning. Anslut reaktorn för rätt nätspänning där alternat finns.

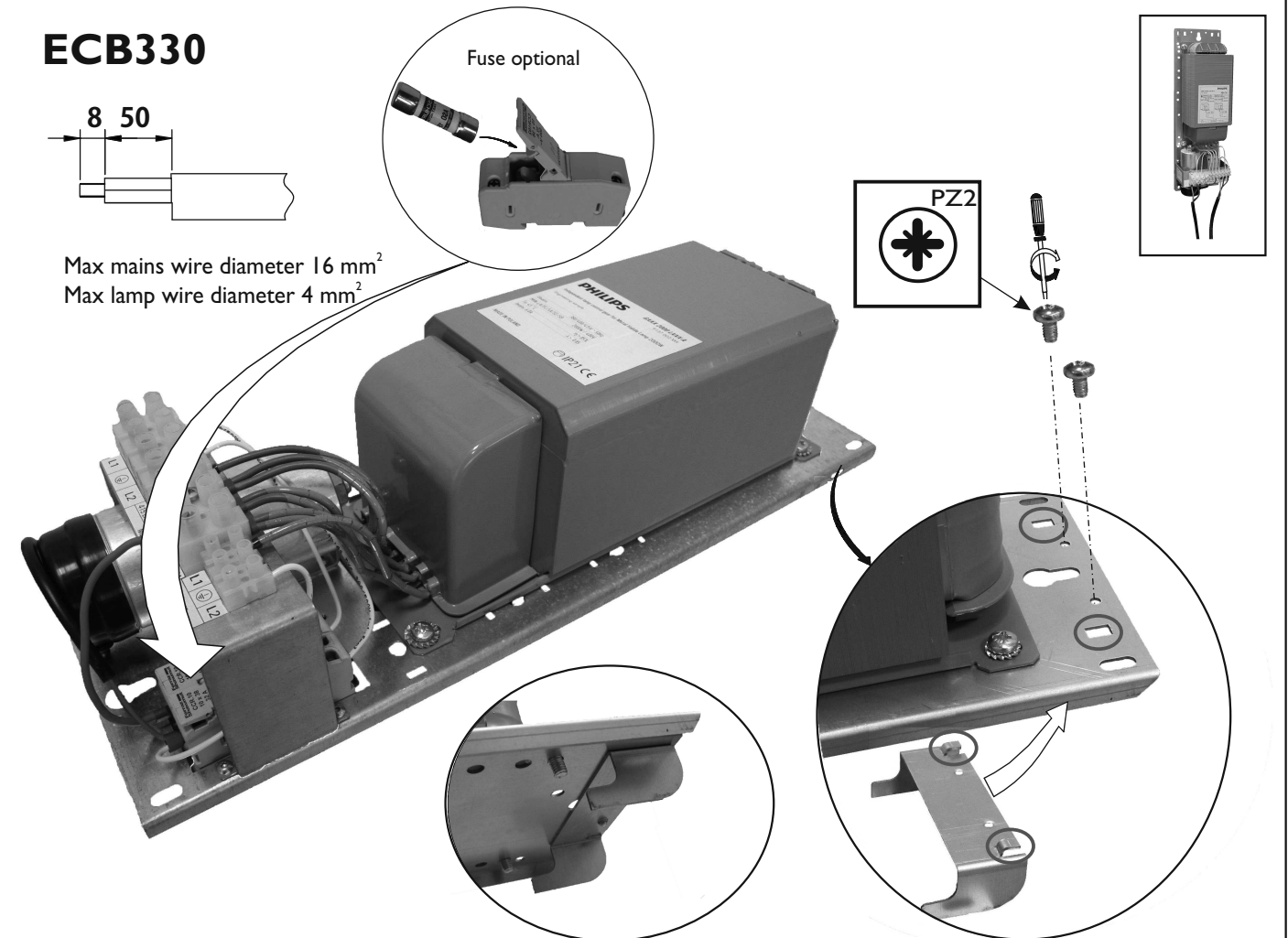
ECB330



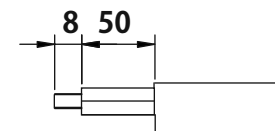
ECP330





ECB330



ECP330



Max mains wire diameter 16 mm²
Max lamp wire diameter 4 mm²

| | D min(mm) | D min(mm) | Recom. Cap Tightening Torque (nm) |  |  |
|--------------------|--------------|--------------|---|---|---|
| PG 16 (M20) | 10 | 14 | 3,3 | — | x1 |
| PG 21 (M25) | 13 | 18 | 5,0 | x3 | x2 |

