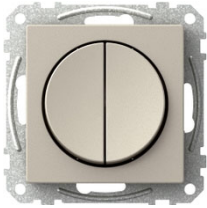


Déclaration UE de Conformité EU Declaration of Conformity

N°/Nr: 1003141-4

**1.0 Identification Produits / Products identification:**

Objet de la déclaration: Interrupteurs d'installation, à vis et sans vis (Exxact)

Object of the declaration: Installation switches, screw & screwless-type (Exxact)

Modèles / Product: voir annexe / see annex



2.0 La présente déclaration de conformité est établie sous la seule responsabilité du fabricant.

Nous, soussignés SCHNEIDER ELECTRIC INDUSTRIES SAS, déclarons par la présente que nos produits catalogués sous marque Schneider Electric, et sous réserve d'installation, d'entretien et d'utilisation conformes à leur destination, à la réglementation, aux normes en vigueur au sein du pays d'installation, aux instructions du constructeur et aux règles de l'art, sont conformes aux exigences essentielles des Directives Européennes suivantes.

L'objet de la déclaration décrit ci-dessus est conforme à la directive 2011/65/UE (et toutes les modifications) du Parlement européen et du Conseil du 8 juin 2011 relative à la limitation de l'utilisation de certaines substances dangereuses dans les équipements électriques et électroniques.



2.0 This declaration of conformity is issued under the sole responsibility of the manufacturer.

We undersigned SCHNEIDER-ELECTRIC INDUSTRIE SAS declare that Schneider Electric branded products, when subject to correct installation, maintenance and use conforming to their intended purpose, according to applicable regulations and standards in the country where they are installed, to the supplier's instructions and to accepted rules of the art comply with Essential Requirements of following European Directives.

The object of the declaration described above is in conformity with Directive 2011/65/EU (and all amendments) of the European Parliament and of the Council of 8 June 2011 on the restriction of the use of certain hazardous substances in electrical and electronic equipment and is also in conformity with the below listed relevant Union harmonisation legislation:



Directive Basse Tension: 2014/35/UE

Low Voltage Directive: 2014/35/EU

3.0 Basé sur les normes suivantes / Based on following standards:

EN 60669-1:2018

EN IEC 63000:2018

4.0 Signé par et au nom de /
Signed for and on behalf of:

Schneider Electric Industries SAS

Date et lieu d'établissement /
Place and date:

Shanghai (China), 11.06.2021



Signature / Signature:

Nom, Fonction / Name, title:

DocuSigned by:



3E41653C276F460...

Zoe ZHU

(SVP, Supply Chain & Quality
Home & Distribution Division)**Schneider Electric Industries SAS**

Adresse / Address:

35, rue Joseph Monier,
92500 Rueil-Malmaison, France<http://www.schneider-electric.com>

Legal information / Mentions légales

Société par actions simplifiée au capital de 896 313 776 euros

954 503 439 rcs Nanterre – code APE : 2712Z

Siret : 954 503 439 01719

n° ident. TVA : FR 04 954 503 439

Siège social : 35 rue Joseph Monier

F – 92500 Rueil-Malmaison

Déclaration UE de Conformité

EU Declaration of Conformity

N°/Nr: 1003141-4

Annexe / Annex

1/7

Modèles / Product	Objet de la déclaration Object of the declaration	Assortiment Range
WDE002016	Switch two-circuits, screwless terminals, white	EXXACT
WDE002017	Switch two-circuits, screwless terminals, white	EXXACT
WDE002018	Switch 2-way, screwless terminals, white	EXXACT
WDE002021	Switch 2-way, screwless terminals, white	EXXACT
WDE002074	Switch two-circuits, screwless terminals, white	EXXACT
WDE002075	Switch 2-way, screwless terminals, white	EXXACT
WDE002085	Switch 1-pole, screw terminals, white	EXXACT
WDE002104	Push-button single, screwless terminals, white	EXXACT
WDE002105	Push-button double, screwless terminals, white	EXXACT
WDE002106	Switch 2-pole, screwless terminals, white	EXXACT
WDE002111	Switch 3-pole, screwless terminals, white	EXXACT
WDE002113	Push-button triple, screwless terminals, white	EXXACT
WDE002116	Switch two-circuits, screwless terminals, white	EXXACT
WDE002117	Switch two-circuits, screwless terminals, white	EXXACT
WDE002121	Switch 2-way, screwless terminals, white	EXXACT
WDE002122	Switch 2-way, screwless terminals, white	EXXACT
WDE002126	Switch 2x 2-way, screwless terminals, white	EXXACT
WDE002131	Switch intermediate, screwless terminals, white	EXXACT
WDE002136	Switch three-circuits, screwless terminals, white	EXXACT
WDE002141	Switch 2-pole + 1-pole, screwless terminals, white	EXXACT
WDE002146	Push-button single with LED, screwless terminals, white	EXXACT
WDE002151	Push-button single with LED, screwless terminals, white	EXXACT
WDE002154	Switch roller blind, screwless terminals, white	EXXACT
WDE002162	Switch 2-pole with LED screwless white	EXXACT
WDE002164	Switch 2-way with LED, screwless terminals, white	EXXACT
WDE002201	Switch 1-pole, screw terminals, white	EXXACT
WDE002207	Switch 2-pole, screw terminals, white	EXXACT
WDE002211	Switch 3-pole, screw terminals, white	EXXACT
WDE002213	Switch 2-pole 2-way, screw terminals, white	EXXACT
WDE002217	Switch two-circuits, screw terminals, white	EXXACT
WDE002222	Switch 2-way, screw terminals, white	EXXACT
WDE002223	Push-button single, screw terminals, white	EXXACT
WDE002224	Push-button double, screw terminals, white	EXXACT

Schneider Electric Industries SAS

Adresse / Address:
35, rue Joseph Monier,
92500 Rueil-Malmaison, France

<http://www.schneider-electric.com>

Legal information / Mentions légales

Société par actions simplifiée au capital de 896 313 776 euros
954 503 439 rcs Nanterre – code APE : 2712Z
Siret : 954 503 439 01719
n° ident. TVA : FR 04 954 503 439
Siège social : 35 rue Joseph Monier
F – 92500 Rueil-Malmaison

Déclaration UE de Conformité EU Declaration of Conformity

N°/Nr: 1003141-4

Annexe / Annex

2/7

Modèles / Product	Objet de la déclaration Object of the declaration	Assortiment Range
WDE002225	Push-button triple, screw terminals, white	EXXACT
WDE002227	Switch 2x 2-way, screw terminals, white	EXXACT
WDE002231	Switch intermediate, screw terminals, white	EXXACT
WDE002236	Switch three-circuits, screw terminals, white	EXXACT
WDE002241	Switch 2-pole + 1-pole, screw terminals, white	EXXACT
WDE002246	Push-button single with LED, screw terminals, white	EXXACT
WDE002254	Switch roller blind, screw terminals, white	EXXACT
WDE002262	Switch 2-pole with LED, screw terminals, white	EXXACT
WDE002264	Switch 2-way with LED, screw terminals, white	EXXACT
WDE002308	Push-button fire door closing, screw terminals, white	EXXACT
WDE002312	Switch 1-pole 2-way with LED, screwless terminals, white	EXXACT
WDE002314	Switch with LED, screw terminals, white	EXXACT
WDE002316	Switch two-circuits round, screwless terminals, white	EXXACT
WDE002317	Switch two-circuits round, screw terminals, white	EXXACT
WDE002321	Switch round 2-way, screwless terminals, white	EXXACT
WDE002322	Switch round 2-way, screw terminals, white	EXXACT
WDE002326	Switch round 2x 2-way, screwless terminals, white	EXXACT
WDE002327	Switch round 2x 2-way, screw terminals, white	EXXACT
WDE002331	Switch intermediate round, screwless terminals, white	EXXACT
WDE002332	Switch intermediate round, screw terminals, white	EXXACT
WDE002504	Push-button single, screwless terminals, white	EXXACT
WDE002505	Push-button double, screwless terminals, white	EXXACT
WDE002506	Switch 2-pole, screwless terminals, white	EXXACT
WDE002511	Switch 3-pole, screwless terminals, white	EXXACT
WDE002513	Push-button triple, screwless terminals, white	EXXACT
WDE002516	Switch two-circuits, screwless terminals, white	EXXACT
WDE002517	Switch two-circuits, screwless terminals, white	EXXACT
WDE002521	Switch 2-way, screwless terminals, white	EXXACT
WDE002522	Switch 2-way, screwless terminals, white	EXXACT
WDE002526	Switch 2x 2-way, screwless terminals, white	EXXACT
WDE002531	Switch intermediate, screwless terminals, white	EXXACT
WDE002536	Switch three-circuits, screwless terminals, white	EXXACT
WDE002541	Switch 2-pole + 1-pole, screwless terminals, white	EXXACT

Schneider Electric Industries SAS

Adresse / Address:
35, rue Joseph Monier,
92500 Rueil-Malmaison, France
<http://www.schneider-electric.com>

Legal information / Mentions légales
Société par actions simplifiée au capital de 896 313 776 euros
954 503 439 rcs Nanterre – code APE : 2712Z
Siret : 954 503 439 01719
n° ident. TVA : FR 04 954 503 439
Siège social : 35 rue Joseph Monier
F – 92500 Rueil-Malmaison

Déclaration UE de Conformité EU Declaration of Conformity

N°/Nr: 1003141-4

Annexe / Annex

3/7

Modèles / Product	Objet de la déclaration Object of the declaration	Assortiment Range
WDE002546	Push-button single with LED, screwless terminals, white	EXXACT
WDE002551	Push-button single with LED, screwless terminals, white	EXXACT
WDE002554	Switch roller blind, screwless terminals, white	EXXACT
WDE002562	Switch 2-pole with LED, screwless terminals, white	EXXACT
WDE002564	Switch 2-way with LED, screwless terminals, white	EXXACT
WDE002617	Switch two-circuits, screw terminals, white	EXXACT
WDE002622	Switch 2-way, screw terminals, white	EXXACT
WDE002654	Switch roller blind, screw terminals, white	EXXACT
WDE002712	Switch 1-pole 2-way with LED, screwless terminals, white	EXXACT
WDE002714	Switch with LED, screw terminals, white	EXXACT
WDE002716	Switch two-circuits round, screwless terminals, white	EXXACT
WDE002721	Switch round 2-way, screwless terminals, white	EXXACT
WDE002726	Switch round 2x 2-way, screwless terminals, white	EXXACT
WDE002731	Switch intermediate round, screwless terminals, white	EXXACT
WDE002916	Switch two-circuits, screwless terminals, white	EXXACT
WDE002917	Switch two-circuits, screwless terminals, white	EXXACT
WDE002921	Switch 2-way, screwless terminals, white	EXXACT
WDE002922	Switch 2-way, screw terminals, white	EXXACT
WDE002934	Surface switch two-circuits, screwless terminals, white	EXXACT
WDE002936	Surface switch 2-way 1 pole, screwless terminals, white	EXXACT
WDE002974	Surface switch two-circuits, screwless terminals, white	EXXACT
WDE002975	Surface switch 2-way, screwless terminals, white	EXXACT
WDE003116	Switch two-circuits, screwless terminals, anthracite	EXXACT
WDE003121	Switch 2-way, screwless terminals, anthracite	EXXACT
WDE003126	Switch 2x 2-way, screwless terminals, anthracite	EXXACT
WDE003131	Switch intermediate, screwless terminals, anthracite	EXXACT
WDE003136	Switch three-circuits, screwless terminals, anthracite	EXXACT
WDE003141	Switch 2-pole + 1-pole, screwless terminals, anthracite	EXXACT
WDE003146	Push-button single with LED, screwless terminals, anthracite	EXXACT
WDE003154	Switch roller blind, screwless terminals, anthracite	EXXACT
WDE003207	Switch 2-pole, screw terminals, anthracite	EXXACT
WDE003213	Switch 2-pole 2-way, screw terminals, anthracite	EXXACT
WDE003217	Switch two-circuits, screw terminals, anthracite	EXXACT

Schneider Electric Industries SAS

Adresse / Address:
35, rue Joseph Monier,
92500 Rueil-Malmaison, France

<http://www.schneider-electric.com>

Legal information / Mentions légales

Société par actions simplifiée au capital de 896 313 776 euros
954 503 439 rcs Nanterre – code APE : 2712Z
Siret : 954 503 439 01719
n° ident. TVA : FR 04 954 503 439
Siège social : 35 rue Joseph Monier
F – 92500 Rueil-Malmaison

Déclaration UE de Conformité EU Declaration of Conformity

N°/Nr: 1003141-4

Annexe / Annex

4/7

Modèles / Product	Objet de la déclaration Object of the declaration	Assortiment Range
WDE003222	Switch 2-way, screw terminals, anthracite	EXXACT
WDE003227	Switch 2x 2-way, screw terminals, anthracite	EXXACT
WDE003231	Switch intermediate, screw terminals, anthracite	EXXACT
WDE003236	Switch three-circuits, screw terminals, anthracite	EXXACT
WDE003241	Switch 2-pole + 1-pole, screw terminals, anthracite	EXXACT
WDE003246	Push-button single with LED, screw terminals, anthracite	EXXACT
WDE003254	Switch roller blind, screw terminals, anthracite	EXXACT
WDE003316	Switch two-circuits round, screwless terminals, anthracite	EXXACT
WDE003317	Switch two-circuits round, screw terminals, anthracite	EXXACT
WDE003321	Switch round 2-way, screwless terminals, anthracite	EXXACT
WDE003322	Switch round 2-way, screw terminals, anthracite	EXXACT
WDE003326	Switch round 2x 2-way, screwless terminals, anthracite	EXXACT
WDE003327	Switch round 2x 2-way, screw terminals, anthracite	EXXACT
WDE003331	Switch intermediate round, screwless terminals, anthracite	EXXACT
WDE003332	Switch intermediate round, screw terminals, anthracite	EXXACT
WDE003516	Switch two-circuits, screwless terminals, anthracite	EXXACT
WDE003521	Switch 2-way, screwless terminals, anthracite	EXXACT
WDE003526	Switch 2x 2-way, screwless terminals, anthracite	EXXACT
WDE003531	Switch intermediate, screwless terminals, anthracite	EXXACT
WDE003536	Switch three-circuits, screwless terminals, anthracite	EXXACT
WDE003622	Switch 2-way, screw terminals, anthracite	EXXACT
WDE003716	Switch two-circuits round, screwless terminals, anthracite	EXXACT
WDE003721	Switch round 2-way, screwless terminals, anthracite	EXXACT
WDE003726	Switch round 2x 2-way, screwless terminals, anthracite	EXXACT
WDE003731	Switch intermediate round, screwless terminals, anthracite	EXXACT
WDE004116	Switch two-circuits, screwless terminals, metallic	EXXACT
WDE004121	Switch 2-way, screwless terminals, metallic	EXXACT
WDE004126	Switch 2x 2-way, screwless terminals, metallic	EXXACT
WDE004131	Switch intermediate, screwless terminals, metallic	EXXACT
WDE004136	Switch three-circuits, screwless terminals, metallic	EXXACT
WDE004141	Switch 2-pole + 1-pole, screwless terminals, metallic	EXXACT
WDE004146	Push-button single with LED, screwless terminals, metallic	EXXACT
WDE004154	Switch roller blind, screwless terminals, metallic	EXXACT

Schneider Electric Industries SAS

Adresse / Address:
35, rue Joseph Monier,
92500 Rueil-Malmaison, France
<http://www.schneider-electric.com>

Legal information / Mentions légales
Société par actions simplifiée au capital de 896 313 776 euros
954 503 439 rcs Nanterre – code APE : 2712Z
Siret : 954 503 439 01719
n° ident. TVA : FR 04 954 503 439
Siège social : 35 rue Joseph Monier
F – 92500 Rueil-Malmaison

Déclaration UE de Conformité EU Declaration of Conformity

N°/Nr: 1003141-4

Annexe / Annex

5/7

Modèles / Product	Objet de la déclaration Object of the declaration	Assortiment Range
WDE004207	Switch 2-pole, screw terminals, metallic	EXXACT
WDE004213	Switch 2-pole 2-way, screw terminals, metallic	EXXACT
WDE004217	Switch two-circuits, screw terminals, metallic	EXXACT
WDE004222	Switch 2-way, screw terminals, metallic	EXXACT
WDE004227	Switch 2x 2-way, screw terminals, metallic	EXXACT
WDE004231	Switch intermediate, screw terminals, metallic	EXXACT
WDE004236	Switch three-circuits, screw terminals, metallic	EXXACT
WDE004241	Switch 2-pole + 1-pole, screw terminals, metallic	EXXACT
WDE004246	Push-button single with LED, screw terminals, metallic	EXXACT
WDE004254	Switch roller blind, screw terminals, metallic	EXXACT
WDE004316	Switch two-circuits round, screwless terminals, metallic	EXXACT
WDE004317	Switch two-circuits round, screw terminals, metallic	EXXACT
WDE004321	Switch round 2-way, screwless terminals, metallic	EXXACT
WDE004322	Switch round 2-way, screw terminals, metallic	EXXACT
WDE004326	Switch round 2x 2-way, screwless terminals, metallic	EXXACT
WDE004327	Switch round 2x 2-way, screw terminals, metallic	EXXACT
WDE004331	Switch intermediate round, screwless terminals, metallic	EXXACT
WDE004332	Switch intermediate round, screw terminals, metallic	EXXACT
WDE004516	Switch two-circuits, screwless terminals, metallic	EXXACT
WDE004521	Switch 2-way, screwless terminals, metallic	EXXACT
WDE004526	Switch 2x 2-way, screwless terminals, metallic	EXXACT
WDE004531	Switch intermediate, screwless terminals, metallic	EXXACT
WDE004536	Switch three-circuits, screwless terminals, metallic	EXXACT
WDE004622	Switch 2-way, screw terminals, metallic	EXXACT
WDE004716	Switch two-circuits round, screwless terminals, metallic	EXXACT
WDE004721	Switch round 2-way, screwless terminals, metallic	EXXACT
WDE004726	Switch round 2x 2-way, screwless terminals, metallic	EXXACT
WDE004731	Switch intermediate round, screwless terminals, metallic	EXXACT
WDE008204	Push-button 2-way, screw terminals, white	EXXACT
WDE008205	Push-button 2-way, screw terminals, white	EXXACT
WDE008207	Switch 2-pole, screw terminals, white	EXXACT
WDE008217	Switch two-circuits, screw terminals, white	EXXACT
WDE008218	Switch two-circuits, screw terminals, white	EXXACT

Schneider Electric Industries SAS

Adresse / Address:
35, rue Joseph Monier,
92500 Rueil-Malmaison, France
<http://www.schneider-electric.com>

Legal information / Mentions légales
Société par actions simplifiée au capital de 896 313 776 euros
954 503 439 rcs Nanterre – code APE : 2712Z
Siret : 954 503 439 01719
n° ident. TVA : FR 04 954 503 439
Siège social : 35 rue Joseph Monier
F – 92500 Rueil-Malmaison

Déclaration UE de Conformité EU Declaration of Conformity

N°/Nr: 1003141-4

Annexe / Annex

6/7

Modèles / Product	Objet de la déclaration Object of the declaration	Assortiment Range
WDE008222	Switch 2-way, screw terminals, white	EXXACT
WDE008223	Switch 2-way, screw terminals, white	EXXACT
WDE008227	Switch 2x 2-way, screw terminals, white	EXXACT
WDE008231	Switch intermediate, screw terminals, white	EXXACT
WDE008236	Switch three-circuits, screw terminals, white	EXXACT
WDE008417	Switch two-circuits, screw terminals, anthracite	EXXACT
WDE008422	Switch 2-way, screw terminals, anthracite	EXXACT
WDE008427	Switch 2x 2-way, screw terminals, anthracite	EXXACT
WDE008431	Switch intermediate, screw terminals, anthracite	EXXACT
WDE008436	Switch three-circuits, screw terminals, anthracite	EXXACT
WDE008617	Switch two-circuits, screw terminals, metallic	EXXACT
WDE008622	Switch 2-way, screw terminals, metallic	EXXACT
WDE008627	Switch, 2 x 2-way, screw terminals, metallic	EXXACT
WDE008631	Switch intermediate, screw terminals, metallic	EXXACT
WDE008636	Switch three-circuits, screw terminals, metallic	EXXACT
WDE008817	Switch two-circuits, screw terminals, white	EXXACT
WDE008822	Switch 2-way, screw terminals, white glass	EXXACT
WDE008917	Switch two-circuits, screw terminals, black glass	EXXACT
WDE008922	Switch 2-way, screw terminals, black glass	EXXACT
WDE009217	Switch two-circuits, screw terminals, brushed steel	EXXACT
WDE009222	Switch 1-pole 2-way, screw terminals, brushed steel	EXXACT
WDE008818	Switch two-circuits, screw terminals, crystal white glass	EXXACT SOLID
WDE008823	Switch 2-way, screw terminals, crystal white glass	EXXACT SOLID
WDE002990	Switch 2-pole screwless terminals, white	EXXACT
WDE002991	Switch two-circuits, screwless terminals, white	EXXACT
WDE002992	Switch 2-way, screwless terminals, white	EXXACT
WDE002993	Switch 2x 2-way, screwless terminals, white	EXXACT
WDE002994	Push-button single, screwless terminals, white	EXXACT
WDE015507	Surface switch 2-pole screwless terminals, white	EXXACT
WDE015511	Surface switch 3-pole screwless terminals, white	EXXACT
WDE015516	Surface switch two-circuits, screwless terminals, white	EXXACT
WDE015521	Surface switch 1-pole 2-way, screwless terminals, white	EXXACT
WDE015526	Surface switch 2x 2-way, screwless terminals, white	EXXACT

Schneider Electric Industries SAS

Adresse / Address:
35, rue Joseph Monier,
92500 Rueil-Malmaison, France

<http://www.schneider-electric.com>

Legal information / Mentions légales

Société par actions simplifiée au capital de 896 313 776 euros
954 503 439 rcs Nanterre – code APE : 2712Z
Siret : 954 503 439 01719
n° ident. TVA : FR 04 954 503 439
Siège social : 35 rue Joseph Monier
F – 92500 Rueil-Malmaison

Déclaration UE de Conformité EU Declaration of Conformity

N°/Nr: 1003141-4

Annexe / Annex

7/7

Modèles / Product	Objet de la déclaration Object of the declaration	Assortiment Range
WDE015531	Surface switch intermediate, screwless terminals, white	EXXACT
WDE015536	Surface switch 3x 1-pole screwless terminals, white	EXXACT
WDE015541	Surface switch 2+1-pole screwless terminals, white	EXXACT
WDE015546	Surface push-button 1-pole with red LED indication screwless terminals, white	EXXACT
WDE015551	Surface push button 1-pole with red LED indication sep circuit, white	EXXACT
WDE015554	Surface push button for jalousie screwless terminals, white	EXXACT
WDE015562	Surface switch 2-pole with red LED indication screwless terminals, white	EXXACT
WDE015564	Surface switch 1-pole with red LED indication screwless terminals, white	EXXACT
WDE015607	Surface switch 2-pole, screw terminals, white	EXXACT
WDE015616	Surface switch two-circuits, screw terminals, white	EXXACT
WDE015621	Surface switch 1-pole 2-way, screw terminals, white	EXXACT
WDE016007	Surface switch 2-pole, screw terminals, white BP	EXXACT
WDE016016	Surface switch two-circuits, screw terminals, white BP	EXXACT
WDE016021	Surface switch 1-pole 2-way, screw terminals, white BP	EXXACT

Schneider Electric Industries SAS

Adresse / Address:
35, rue Joseph Monier,
92500 Rueil-Malmaison, France
<http://www.schneider-electric.com>

Legal information / Mentions légales
Société par actions simplifiée au capital de 896 313 776 euros
954 503 439 rcs Nanterre – code APE : 2712Z
Siret : 954 503 439 01719
n° ident. TVA : FR 04 954 503 439
Siège social : 35 rue Joseph Monier
F – 92500 Rueil-Malmaison