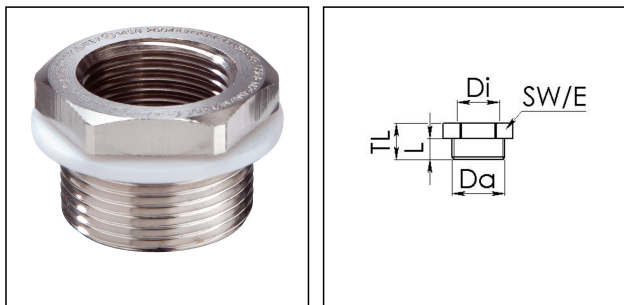


## OSRA 20 / M20(M)\*M16(F)

Ex d Reduction adaptor, brass nickel-plated, M20-M16



Products may differ in size, colour and appearance to those shown. If you require further information or customisation, please contact us directly.



|                          |                         |
|--------------------------|-------------------------|
| Material                 | Brass nickel-plated     |
| Temp. range min          | -60 °C                  |
| Temp. range max          | 110 °C                  |
| Protection class         | IP66 / IP67             |
| Type of protection       | Ex eb, Ex tb, Ex db     |
| Ex-Certificate           | IECEx, ATEX             |
| Thread type outer        | M                       |
| Ø outer thread           | 20                      |
| Lead outer               | 1,5                     |
| Thread type inner        | M                       |
| Ø inner thread           | 16                      |
| Lead inner               | 1,5                     |
| Length screw-in thread L | 15 mm                   |
| Key width SW             | 25 mm                   |
| Collar diameter (E)      | 27 mm                   |
| Total length TL          | 20 mm                   |
| Surface                  | Nickel-plated           |
| Order no. nickel-plated  | 50065650                |
| Type                     | OSRA 20 / M20(M)*M16(F) |
| Packing unit             | 1                       |
| ETIM-Classification      | EC000938                |

03.08.2021

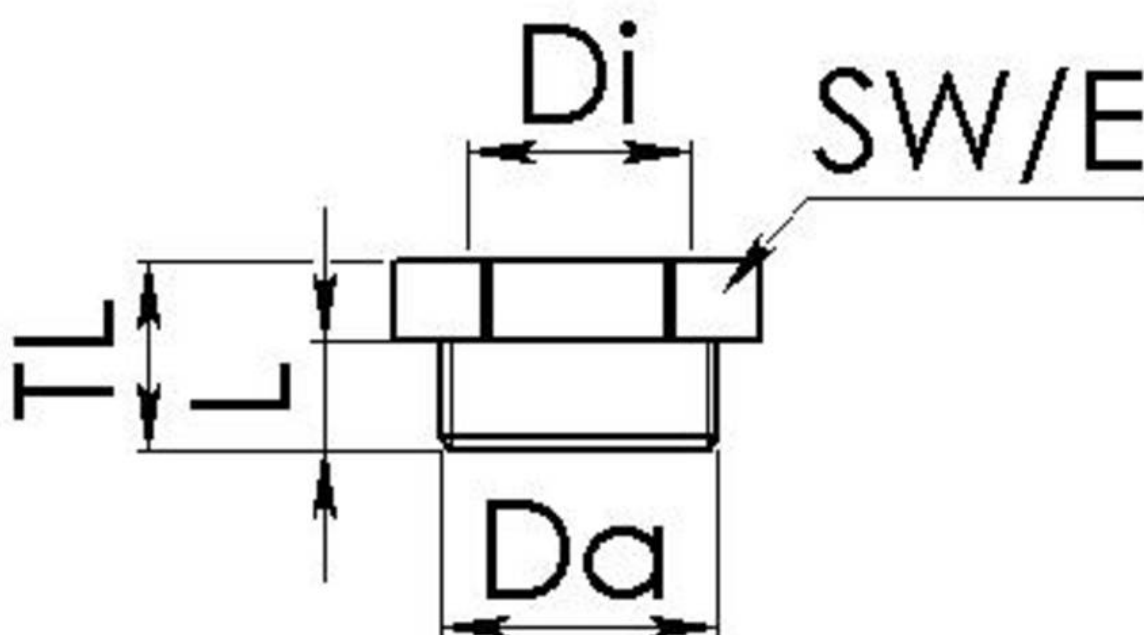
Your Contact:

WISKA Hoppmann GmbH

Kisdorfer Weg 28 · 24568 Kaltenkirchen · Germany

☎ +49-4191-508-0 · 📠 +49-4191-508-209

contact@wiska.de · www.wiska.com



Your Contact:

**WISKA Hoppmann GmbH**

Kisdorfer Weg 28 · 24568 Kaltenkirchen · Germany

☎ +49-4191-508-0 · 📠 +49-4191-508-209

contact@wiska.de · www.wiska.com