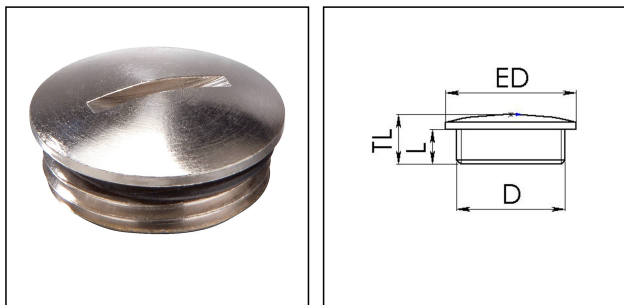


EMVS-ORD 16

Stop end, with O-ring, brass nickel-plated, M16



Products may differ in size, colour and appearance to those shown. If you require further information or customisation, please contact us directly.



Material	Brass nickel-plated
Surface	Nickel-plated
Temp. range min	-40 °C
Temp. range max	120 °C
Protection class	IP66 / IP68 (5 bar 30 min)
Thread type	M
Ø Connection thread D	16
Lead	1,5
Length screw-in thread L	5 mm
External diameter ED	18 mm
Total length TL	8 mm
Order no. nickel-plated	10065081
Type	EMVS-ORD 16
Packing unit	100
ETIM-Classification	EC000032

Recommended accessories

EMMU 16	10063142
---------	----------

17.06.2021

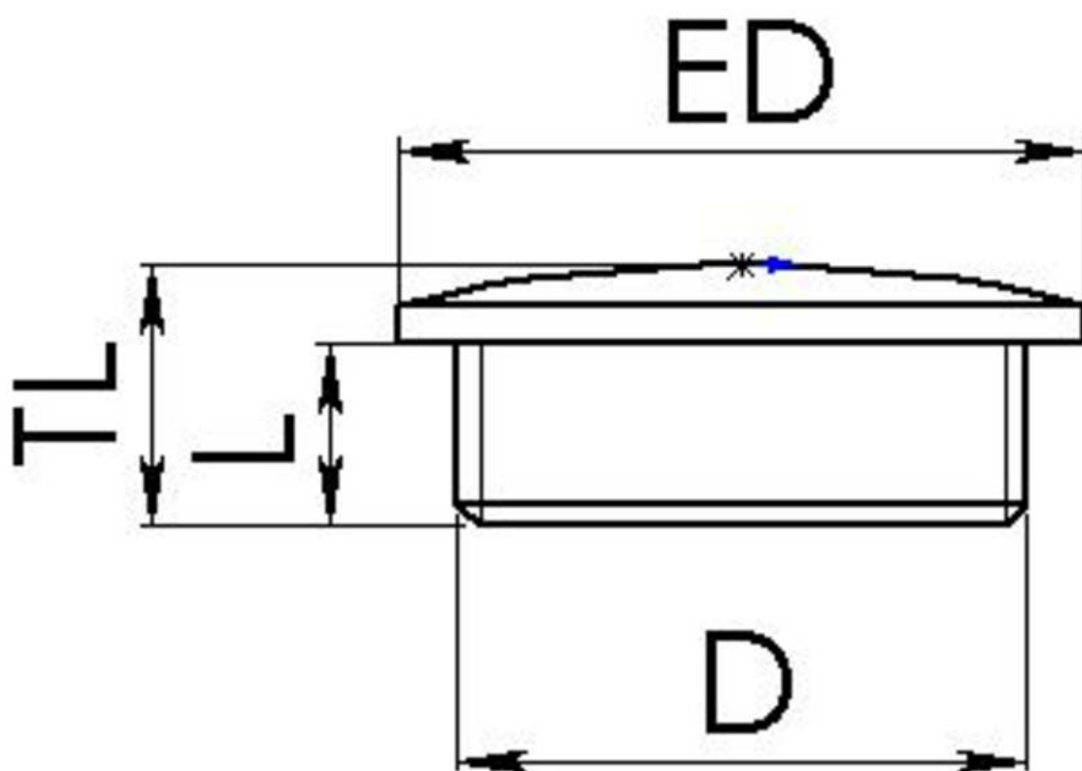
Your Contact:

WISKA Hoppmann GmbH

Kisdorfer Weg 28 · 24568 Kaltenkirchen · Germany

☎ +49-4191-508-0 · 📠 +49-4191-508-209

contact@wiska.de · www.wiska.com



Your Contact:

WISKA Hoppmann GmbH

Kisdorfer Weg 28 · 24568 Kaltenkirchen · Germany

☎ +49-4191-508-0 · 📠 +49-4191-508-209

contact@wiska.de · www.wiska.com

Other technical data on request / subject to change without notice