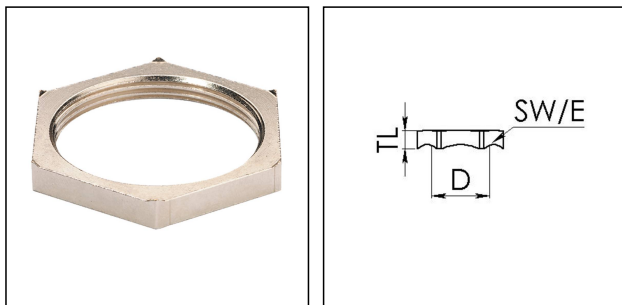


## MMU-EMV 21

EMC-locknut, brass nickel-plated, Pg21



Products may differ in size, colour and appearance to those shown. If you require further information or customisation, please contact us directly.



<b>Material</b>	Brass nickel-plated
<b>Thread type</b>	PG
<b>Ø Connection thread D</b>	21
<b>Key width SW</b>	32 mm
<b>Total length TL</b>	5,2 mm
<b>Surface</b>	Nickel-plated
<b>Order no. nickel-plated</b>	10063223
<b>Type</b>	MMU-EMV 21
<b>Packing unit</b>	50
<b>Tariff number</b>	74153300
<b>ETIM-Classification</b>	EC000940

03.04.2023

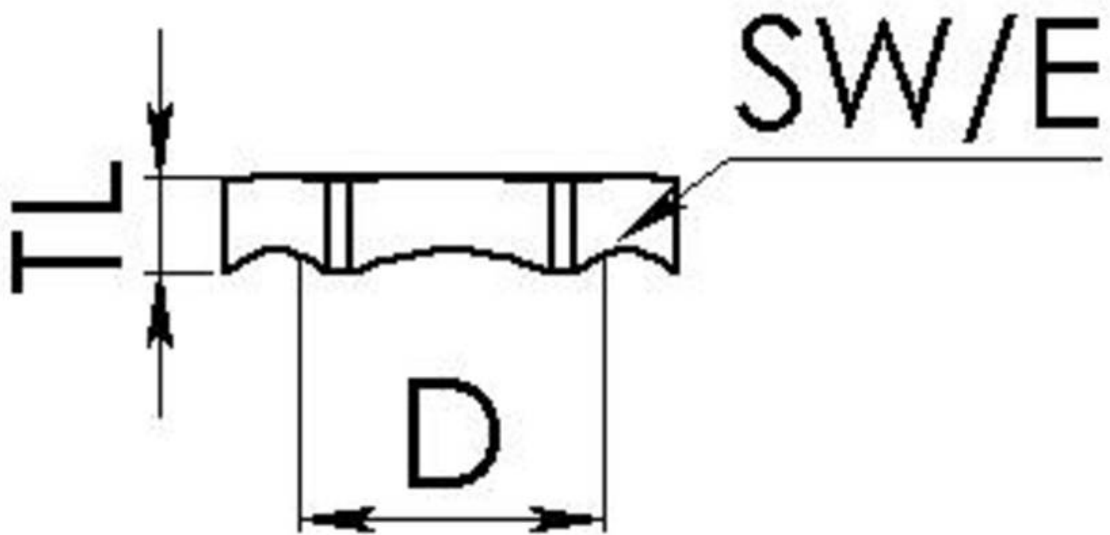
Your Contact:

**WISKA Hoppmann GmbH**

Kisdorfer Weg 28 · 24568 Kaltenkirchen · Germany

☎ +49-4191-508-0 · 📠 +49-4191-508-209

contact@wiska.de · www.wiska.com



Your Contact:

**WISKA Hoppmann GmbH**

Kisdorfer Weg 28 · 24568 Kaltenkirchen · Germany

☎ +49-4191-508-0 · 📠 +49-4191-508-209

contact@wiska.de · www.wiska.com

Other technical data on request / subject to change without notice