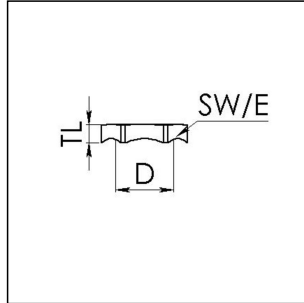


MMU-EMV 16

EMC-locknut, brass nickel-plated, Pg16



Products may differ in size, colour and appearance to those shown. If you require further information or customisation, please contact us directly.



Material	Brass nickel-plated
Thread type	PG
Ø Connection thread D	16
Key width SW	26 mm
Total length TL	4,7 mm
Surface	Nickel-plated
Order no. nickel-plated	10063222
Type	MMU-EMV 16
Packing unit	100
Tariff number	74153300
ETIM-Classification	EC000940

03.04.2023

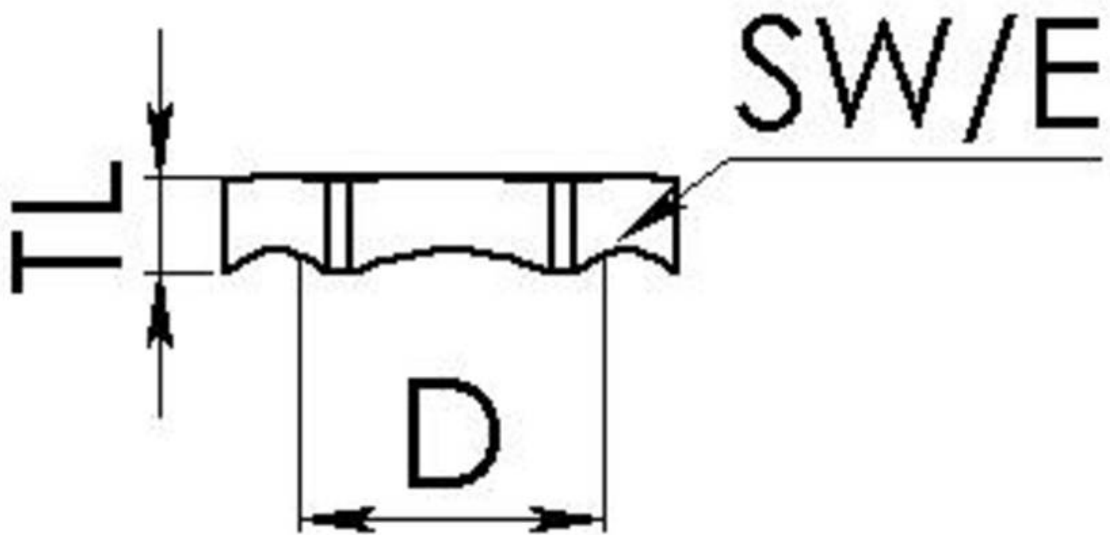
Your Contact:

WISKA Hoppmann GmbH

Kisdorfer Weg 28 · 24568 Kaltenkirchen · Germany

☎ +49-4191-508-0 · 📠 +49-4191-508-209

contact@wiska.de · www.wiska.com



Your Contact:

WISKA Hoppmann GmbH

Kisdorfer Weg 28 · 24568 Kaltenkirchen · Germany

☎ +49-4191-508-0 · 📠 +49-4191-508-209

contact@wiska.de · www.wiska.com

Other technical data on request / subject to change without notice