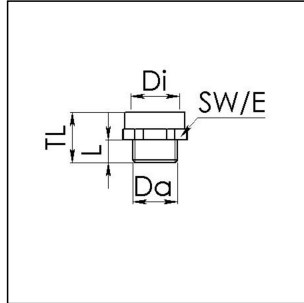


AMPM 36/50

Adaptor, brass nickel-plated, Pg36 / M50



Products may differ in size, colour and appearance to those shown. If you require further information or customisation, please contact us directly.



| | |
|---------------------------------|---------------------|
| Material | Brass nickel-plated |
| Temp. range min | -200 °C |
| Temp. range max | 250 °C |
| Thread type outer | PG |
| Ø outer thread | 36 |
| Length screw-in thread L | 9 mm |
| Thread type inner | M |
| Ø inner thread | 50 |
| Lead inner | 1,5 |
| Length internal thread | 11 mm |
| Key width SW | 55 mm |
| Collar diameter (E) | 60 mm |
| Total length TL | 23 mm |
| Surface | Nickel-plated |
| Order no. nickel-plated | 10063901 |
| Type | AMPM 36/50 |
| Packing unit | 25 |
| ETIM-Classification | EC000938 |

Recommended accessories

| | |
|---------------|----------|
| MMU 36 | 10062148 |
|---------------|----------|

27.05.2021

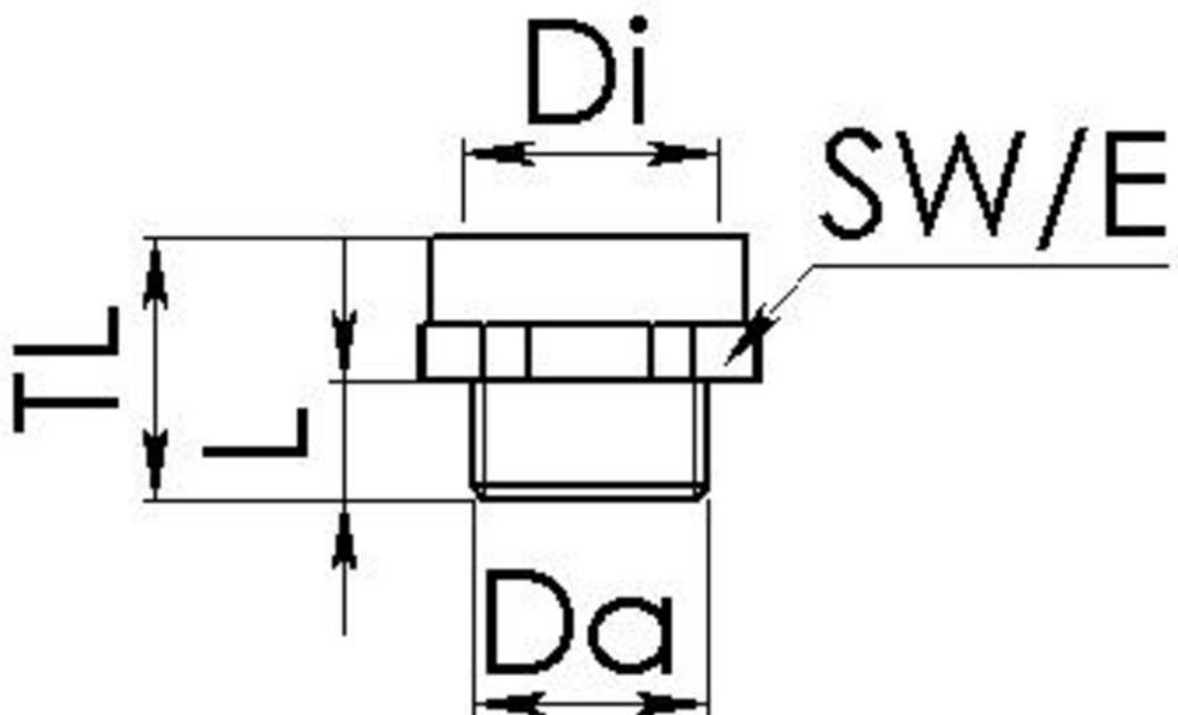
Your Contact:

WISKA Hoppmann GmbH

Kisdorfer Weg 28 · 24568 Kaltenkirchen · Germany

☎ +49-4191-508-0 · 📠 +49-4191-508-209

contact@wiska.de · www.wiska.com



Your Contact:

WISKA Hoppmann GmbH

Kisdorfer Weg 28 · 24568 Kaltenkirchen · Germany

☎ +49-4191-508-0 · 📠 +49-4191-508-209

contact@wiska.de · www.wiska.com