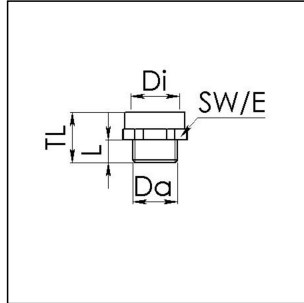


AMPM 29/40

Adaptor, brass nickel-plated, Pg29 / M40



Products may differ in size, colour and appearance to those shown. If you require further information or customisation, please contact us directly.



Material	Brass nickel-plated
Temp. range min	-200 °C
Temp. range max	250 °C
Thread type outer	PG
Ø outer thread	29
Length screw-in thread L	8 mm
Thread type inner	M
Ø inner thread	40
Lead inner	1,5
Length internal thread	10,5 mm
Key width SW	43 mm
Collar diameter (E)	46 mm
Total length TL	21 mm
Surface	Nickel-plated
Order no. nickel-plated	10063898
Type	AMPM 29/40
Packing unit	50
ETIM-Classification	EC000938

Recommended accessories

MMU 29	10062147
---------------	----------

27.05.2021

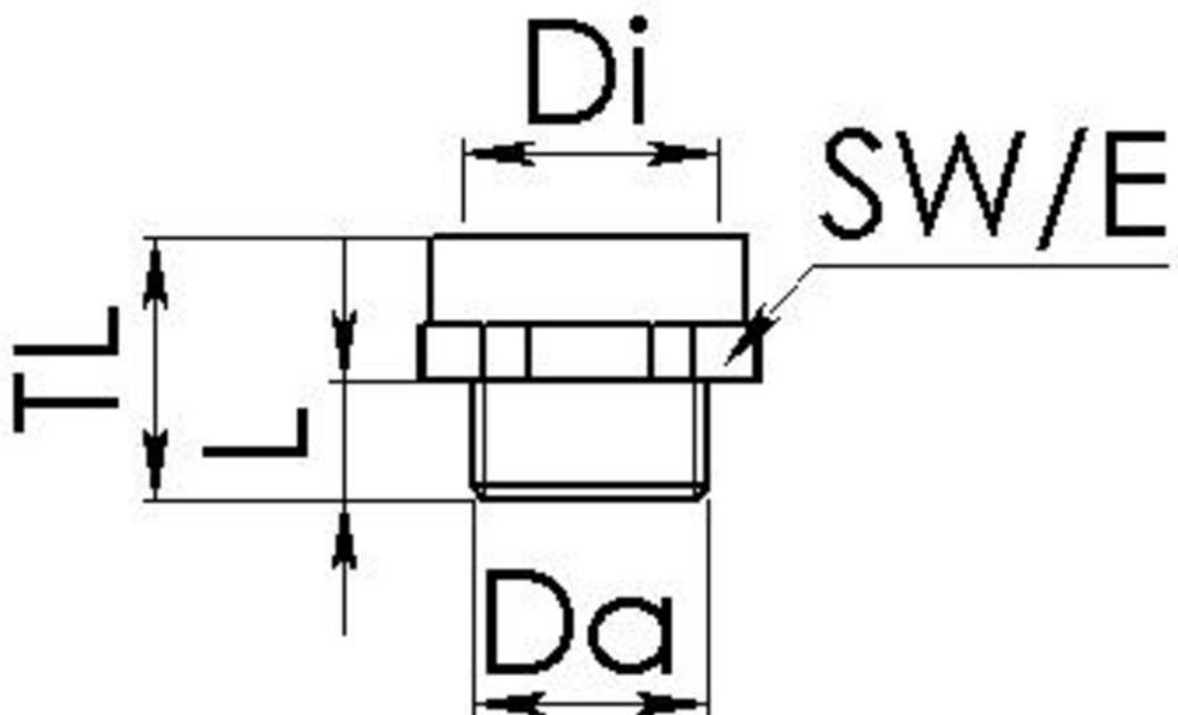
Your Contact:

WISKA Hoppmann GmbH

Kisdorfer Weg 28 · 24568 Kaltenkirchen · Germany

☎ +49-4191-508-0 · 📠 +49-4191-508-209

contact@wiska.de · www.wiska.com



Your Contact:

WISKA Hoppmann GmbH

Kisdorfer Weg 28 · 24568 Kaltenkirchen · Germany

☎ +49-4191-508-0 · 📠 +49-4191-508-209

contact@wiska.de · www.wiska.com