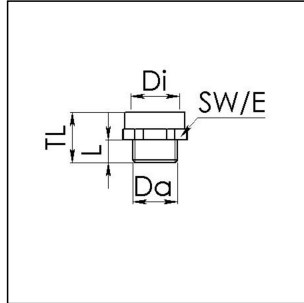


AMPM 16/25

Adaptor, brass nickel-plated, Pg16 / M25



Products may differ in size, colour and appearance to those shown. If you require further information or customisation, please contact us directly.



Material	Brass nickel-plated
Temp. range min	-200 °C
Temp. range max	250 °C
Thread type outer	PG
Ø outer thread	16
Length screw-in thread L	6,5 mm
Thread type inner	M
Ø inner thread	25
Lead inner	1,5
Length internal thread	9,5 mm
Key width SW	30 mm
Collar diameter (E)	34 mm
Total length TL	18,5 mm
Surface	Nickel-plated
Order no. nickel-plated	10063892
Type	AMPM 16/25
Packing unit	100
ETIM-Classification	EC000938

Recommended accessories

MMU 16	10062145
--------	----------

27.05.2021

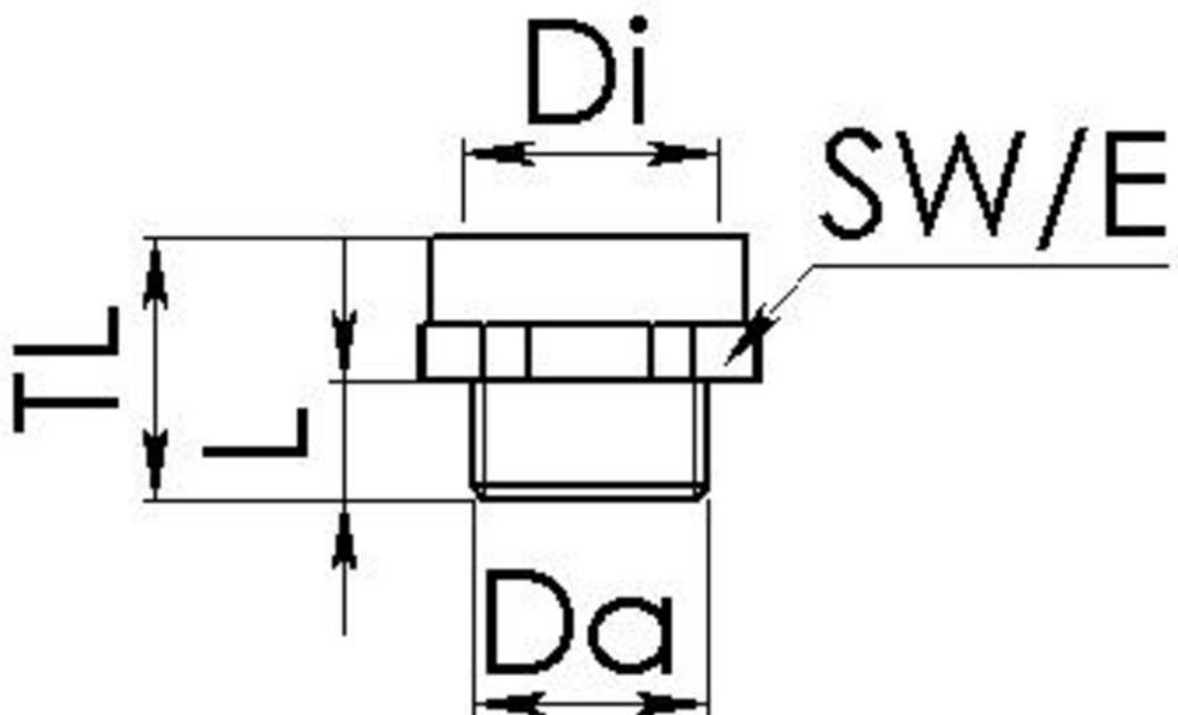
Your Contact:

WISKA Hoppmann GmbH

Kisdorfer Weg 28 · 24568 Kaltenkirchen · Germany

☎ +49-4191-508-0 · 📠 +49-4191-508-209

contact@wiska.de · www.wiska.com



Your Contact:

WISKA Hoppmann GmbH

Kisdorfer Weg 28 · 24568 Kaltenkirchen · Germany

☎ +49-4191-508-0 · 📠 +49-4191-508-209

contact@wiska.de · www.wiska.com

Other technical data on request / subject to change without notice