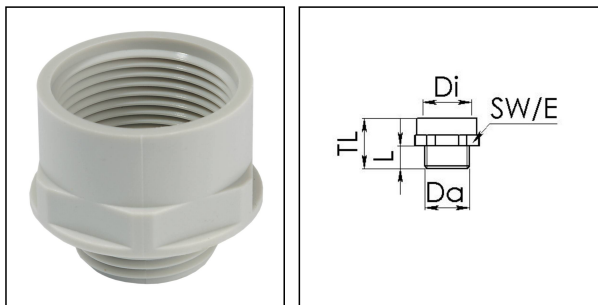


APM 21/25

Adaptor polyamide, RAL 7035, Pg21 / M25



Products may differ in size, colour and appearance to those shown. If you require further information or customisation, please contact us directly.



Material	Polyamide, fibre reinforced
Temp. range min	-40 °C
Temp. range max	100 °C
Glow wire test	650 °C
Thread type outer	PG
Ø outer thread	21
Length screw-in thread L	12 mm
Thread type inner	M
Ø inner thread	25
Lead inner	1,5
Length internal thread	15,5 mm
Total length TL	30 mm
Key width SW	33 mm
Collar diameter (E)	36 mm
Form	A
Product Color	RAL 7035
Order no. RAL 7035	10063664
Type	APM 21/25
Packing unit	10
ETIM-Classification	EC000938

Recommended accessories

MUG 21	10060675
---------------	----------

Your Contact:

WISKA Hoppmann GmbH

Kisdorfer Weg 28 · 24568 Kaltenkirchen · Germany

☎ +49-4191-508-0 · 📠 +49-4191-508-209

contact@wiska.de · www.wiska.com

27.05.2021

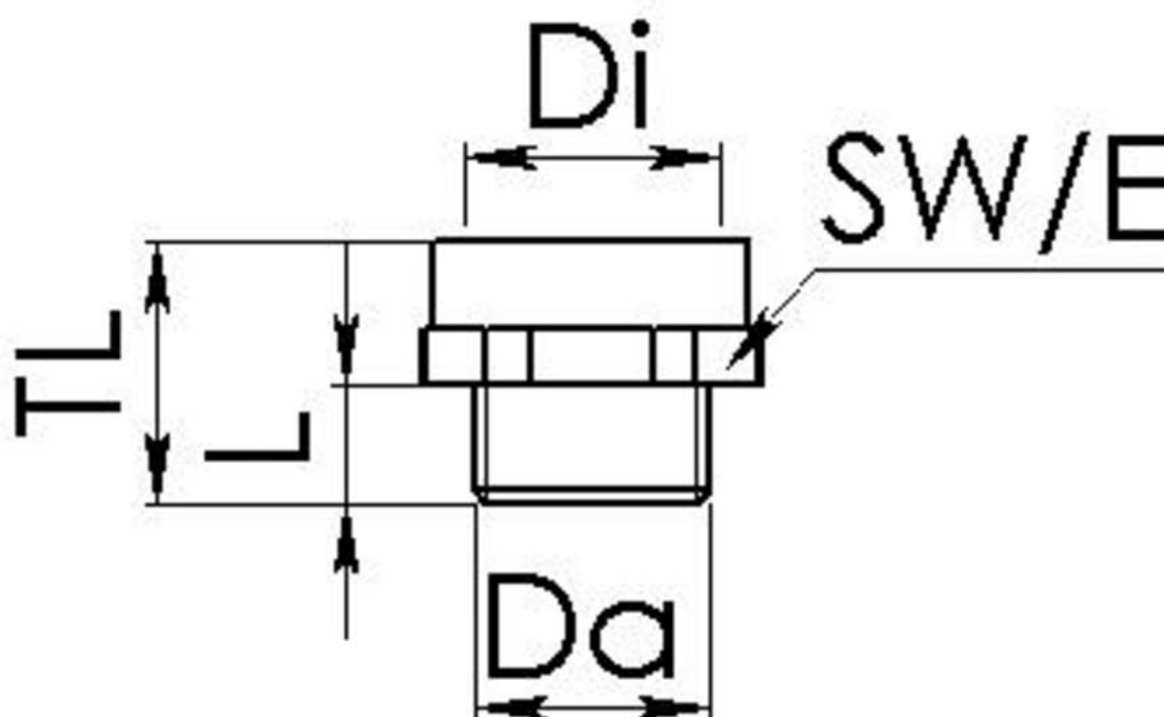
Your Contact:

WISKA Hoppmann GmbH

Kisdorfer Weg 28 · 24568 Kaltenkirchen · Germany

 +49-4191-508-0 ·  +49-4191-508-209

contact@wiska.de · www.wiska.com



Your Contact:

WISKA Hoppmann GmbH

Kisdorfer Weg 28 · 24568 Kaltenkirchen · Germany

☎ +49-4191-508-0 · 📠 +49-4191-508-209

contact@wiska.de · www.wiska.com

Other technical data on request / subject to change without notice