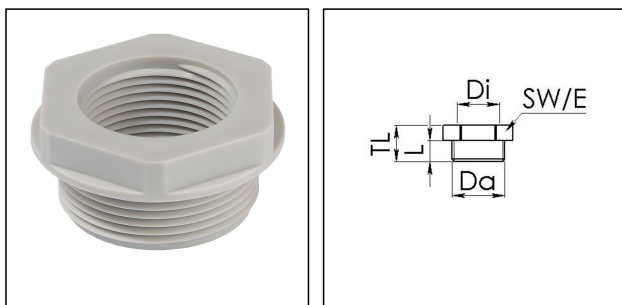


KRM 63/50

Reduction adaptor, polyamide, RAL 7035, M63 / M50



Products may differ in size, colour and appearance to those shown. If you require further information or customisation, please contact us directly.



Material	Polyamide, fibre reinforced
Temp. range min	-40 °C
Temp. range max	100 °C
Glow wire test	650 °C
Thread type outer	M
Ø outer thread	63
Lead outer	1,5
Length screw-in thread L	15 mm
Thread type inner	M
Ø inner thread	50
Lead inner	1,5
Total length TL	22 mm
Key width SW	65 mm
Collar diameter (E)	73 mm
Product Color	RAL 7035
Order no. RAL 7035	10063594
Type	KRM 63/50
Packing unit	5
ETIM-Classification	EC000938

Recommended accessories

EMUG 63	10060777
EADR 63	10062808

Your Contact:

WISKA Hoppmann GmbH

Kisdorfer Weg 28 · 24568 Kaltenkirchen · Germany

☎ +49-4191-508-0 · 📠 +49-4191-508-209



contact@wiska.de · www.wiska.com

25.05.2021

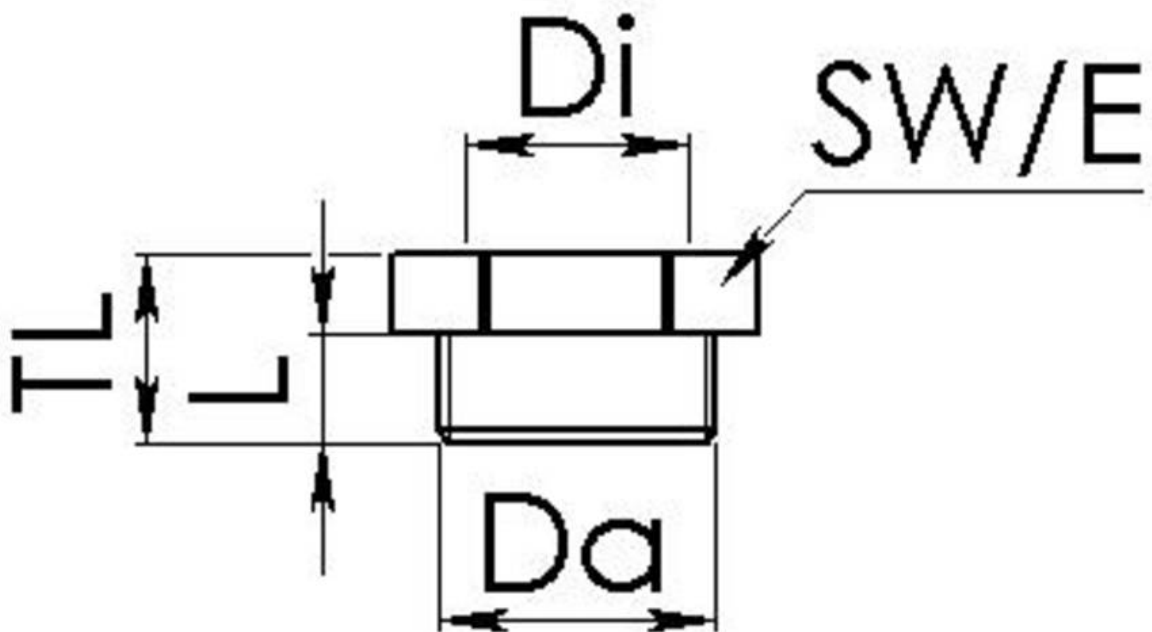
Your Contact:

WISKA Hoppmann GmbH

Kisdorfer Weg 28 · 24568 Kaltenkirchen · Germany

 +49-4191-508-0 ·  +49-4191-508-209

contact@wiska.de · www.wiska.com



Your Contact:

WISKA Hoppmann GmbH

Kisdorfer Weg 28 · 24568 Kaltenkirchen · Germany

☎ +49-4191-508-0 · 📠 +49-4191-508-209

contact@wiska.de · www.wiska.com