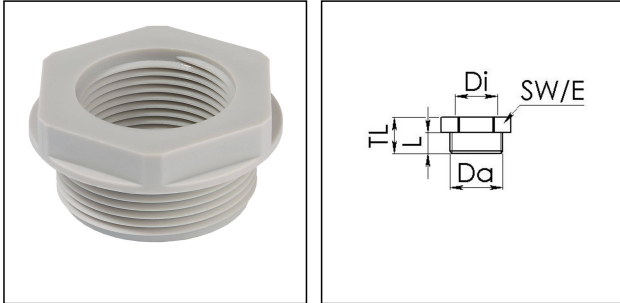


KRM 40/32

Reduction adaptor, polyamide, RAL 7035, M40 / M32



Products may differ in size, colour and appearance to those shown. If you require further information or customisation, please contact us directly.



Material	Polyamide, fibre reinforced
Temp. range min	-40 °C
Temp. range max	100 °C
Glow wire test	650 °C
Thread type outer	M
Ø outer thread	40
Lead outer	1,5
Length screw-in thread L	12 mm
Thread type inner	M
Ø inner thread	32
Lead inner	1,5
Total length TL	19 mm
Key width SW	46 mm
Collar diameter (E)	51 mm
Product Color	RAL 7035
Order no. RAL 7035	10063588
Type	KRM 40/32
Packing unit	25
ETIM-Classification	EC000938

Recommended accessories

EMUG 40	10060775
EADR 40	10062806

Your Contact:

WISKA Hoppmann GmbH

Kisdorfer Weg 28 · 24568 Kaltenkirchen · Germany

☎ +49-4191-508-0 · 📠 +49-4191-508-209



contact@wiska.de · www.wiska.com

25.05.2021

Your Contact:

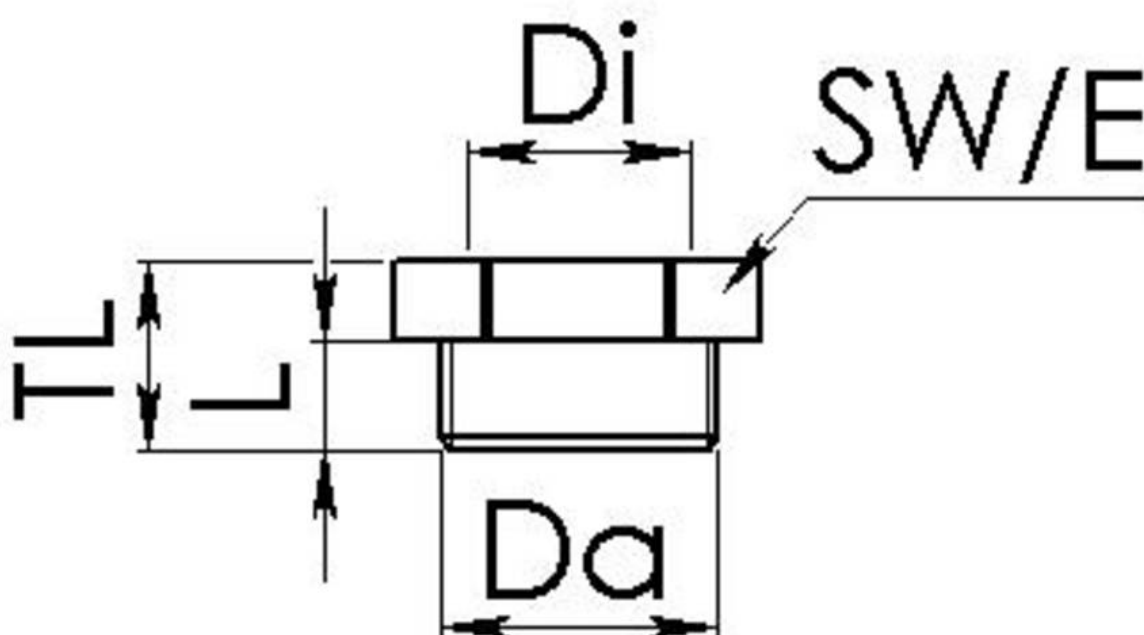
WISKA Hoppmann GmbH

Kisdorfer Weg 28 · 24568 Kaltenkirchen · Germany

 +49-4191-508-0 ·  +49-4191-508-209

contact@wiska.de · www.wiska.com

Other technical data on request / subject to change without notice



Your Contact:

WISKA Hoppmann GmbH

Kisdorfer Weg 28 · 24568 Kaltenkirchen · Germany

☎ +49-4191-508-0 · 📠 +49-4191-508-209

contact@wiska.de · www.wiska.com