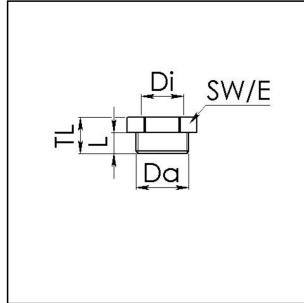


KRM 25/12

Reduction adaptor, polyamide, RAL 7035, M25 / M12



Products may differ in size, colour and appearance to those shown. If you require further information or customisation, please contact us directly.



Material	Polyamide, fibre reinforced
Temp. range min	-40 °C
Temp. range max	100 °C
Glow wire test	650 °C
Thread type outer	M
Ø outer thread	25
Lead outer	1,5
Length screw-in thread L	10 mm
Thread type inner	M
Ø inner thread	12
Lead inner	1,5
Total length TL	17 mm
Key width SW	29 mm
Collar diameter (E)	32 mm
Product Color	RAL 7035
Order no. RAL 7035	10063580
Type	KRM 25/12
Packing unit	100
ETIM-Classification	EC000938

Recommended accessories

EMUG 25	10060773
EADR 25	10062804

Your Contact:

WISKA Hoppmann GmbH

Kisdorfer Weg 28 · 24568 Kaltenkirchen · Germany

☎ +49-4191-508-0 · 📠 +49-4191-508-209



contact@wiska.de · www.wiska.com

24.05.2021

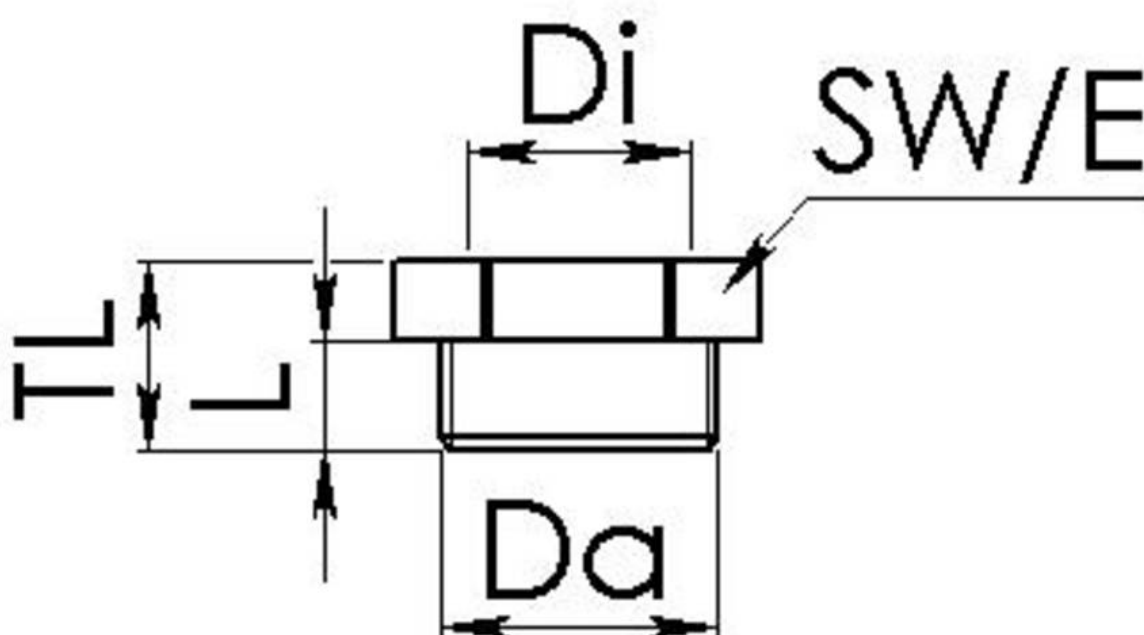
Your Contact:

WISKA Hoppmann GmbH

Kisdorfer Weg 28 · 24568 Kaltenkirchen · Germany

 +49-4191-508-0 ·  +49-4191-508-209

contact@wiska.de · www.wiska.com



Your Contact:

WISKA Hoppmann GmbH

Kisdorfer Weg 28 · 24568 Kaltenkirchen · Germany

☎ +49-4191-508-0 · 📠 +49-4191-508-209

contact@wiska.de · www.wiska.com