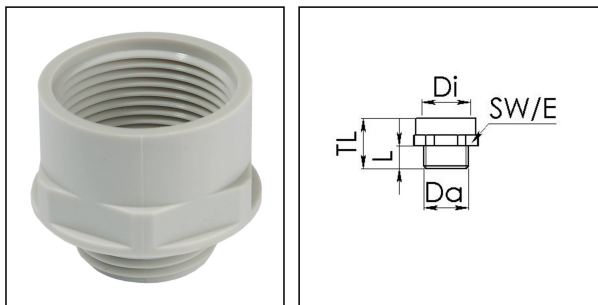


KEM 16/20

Enlargement adaptor, polyamide, RAL 7035, M16 / M20



Products may differ in size, colour and appearance to those shown. If you require further information or customisation, please contact us directly.



Material	Polyamide, fibre reinforced
Temp. range min	-40 °C
Temp. range max	100 °C
Glow wire test	650 °C
Thread type outer	M
Ø outer thread	16
Lead outer	1,5
Length screw-in thread L	9 mm
Thread type inner	M
Ø inner thread	20
Lead inner	1,5
Length internal thread	15,5 mm
Total length TL	27 mm
Key width SW	24 mm
Collar diameter (E)	27 mm
Product Color	RAL 7035
Order no. RAL 7035	10063571
Type	KEM 16/20
Packing unit	100
ETIM-Classification	EC000938

Recommended accessories

EMUG 16	10060771
----------------	----------

Your Contact:

WISKA Hoppmann GmbH

Kisdorfer Weg 28 · 24568 Kaltenkirchen · Germany

☎ +49-4191-508-0 · 📠 +49-4191-508-209



contact@wiska.de · www.wiska.com

24.05.2021

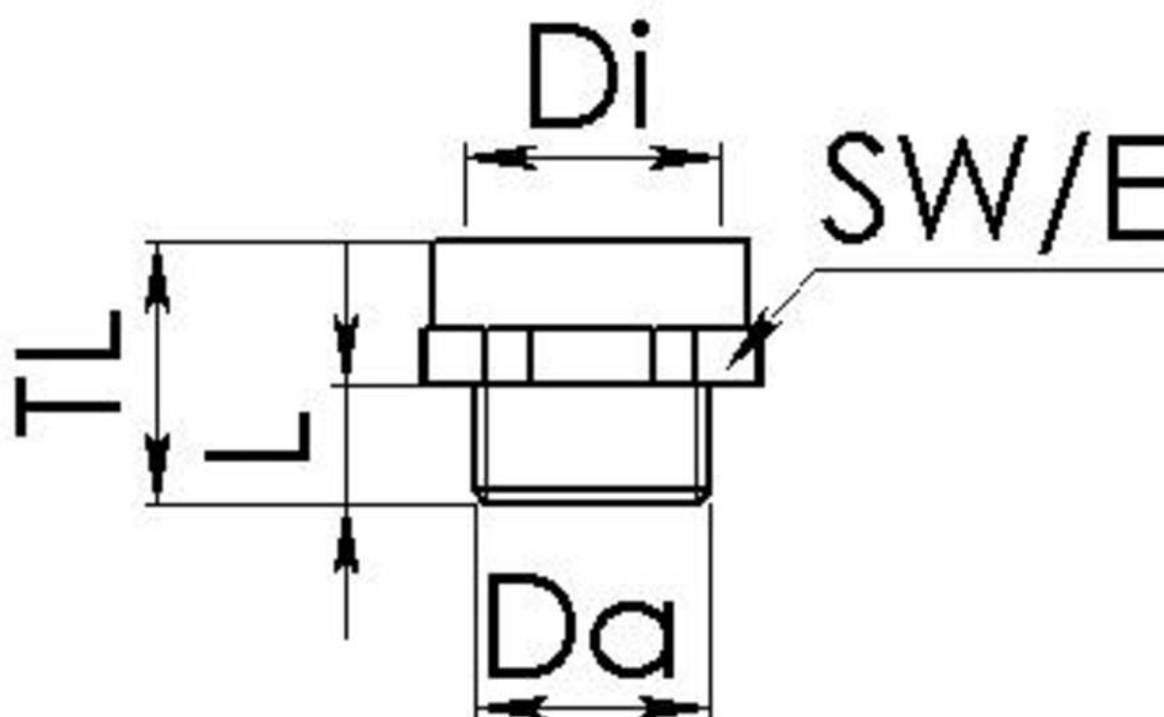
Your Contact:

WISKA Hoppmann GmbH

Kisdorfer Weg 28 · 24568 Kaltenkirchen · Germany

 +49-4191-508-0 ·  +49-4191-508-209

contact@wiska.de · www.wiska.com



Your Contact:

WISKA Hoppmann GmbH

Kisdorfer Weg 28 · 24568 Kaltenkirchen · Germany

☎ +49-4191-508-0 · 📠 +49-4191-508-209

contact@wiska.de · www.wiska.com

Other technical data on request / subject to change without notice