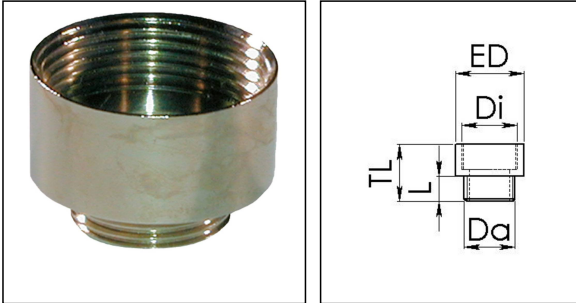


## MEP 16 - 21

Enlargement adaptor, brass nickel-plated, Pg16 / Pg21



Products may differ in size, colour and appearance to those shown. If you require further information or customisation, please contact us directly.



<b>Material</b>	Brass nickel-plated
<b>Temp. range min</b>	-200 °C
<b>Temp. range max</b>	250 °C
<b>Thread type outer</b>	PG
<b>Ø outer thread</b>	16
<b>Length screw-in thread L</b>	6,5 mm
<b>Thread type inner</b>	PG
<b>Ø inner thread</b>	21
<b>Length internal thread</b>	8,5 mm
<b>External diameter ED</b>	30 mm
<b>Total length TL</b>	21 mm
<b>Surface</b>	Nickel-plated
<b>Order no. nickel-plated</b>	10062199
<b>Type</b>	MEP 16 - 21
<b>Packing unit</b>	100
<b>ETIM-Classification</b>	EC000938

### Recommended accessories

<b>MMU 16</b>	10062145
---------------	----------

23.05.2021

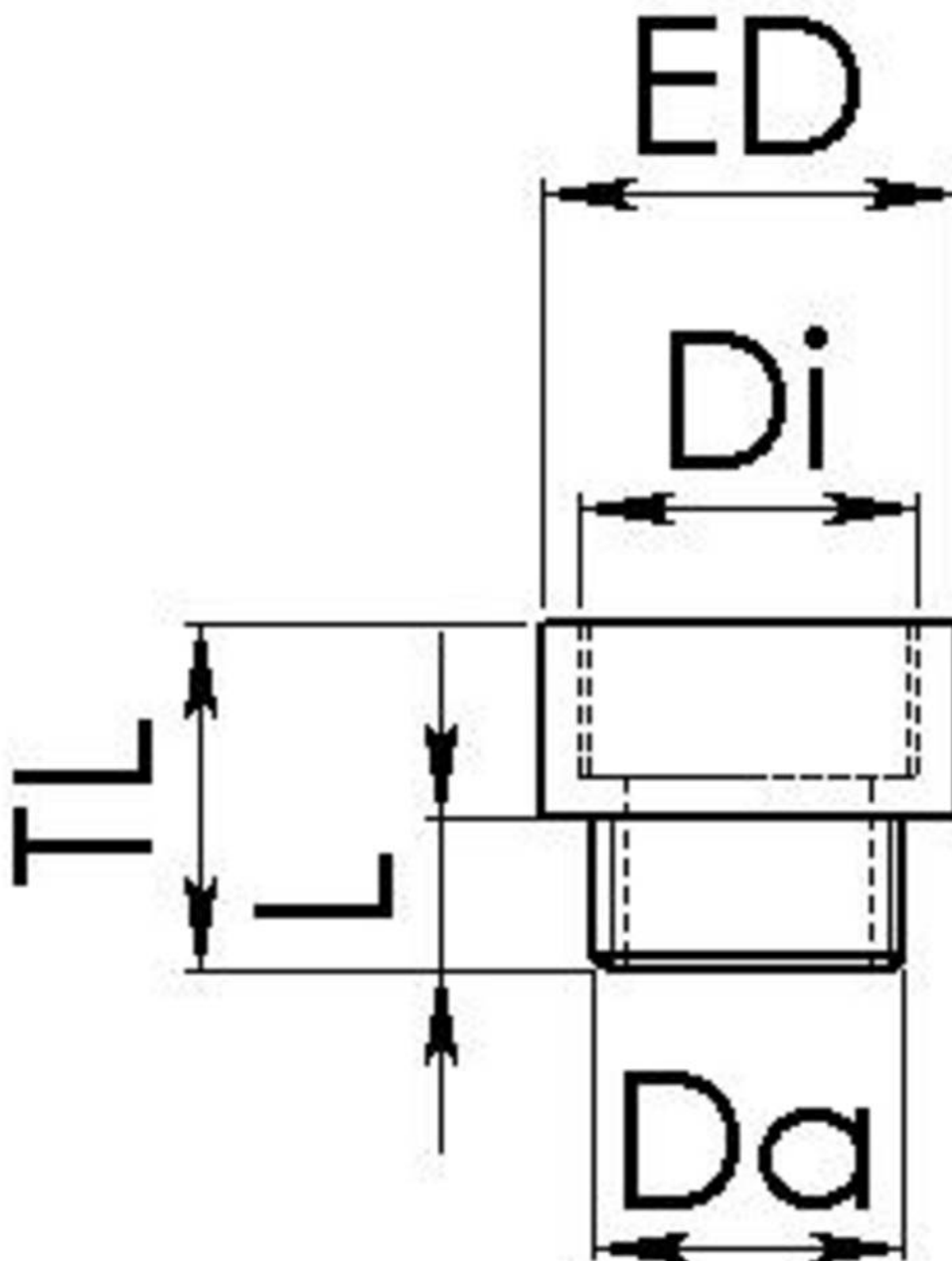
Your Contact:

**WISKA Hoppmann GmbH**

Kisdorfer Weg 28 · 24568 Kaltenkirchen · Germany

☎ +49-4191-508-0 · 📠 +49-4191-508-209

contact@wiska.de · www.wiska.com



Your Contact:

**WISKA Hoppmann GmbH**

Kisdorfer Weg 28 · 24568 Kaltenkirchen · Germany

☎ +49-4191-508-0 · 📠 +49-4191-508-209

contact@wiska.de · www.wiska.com