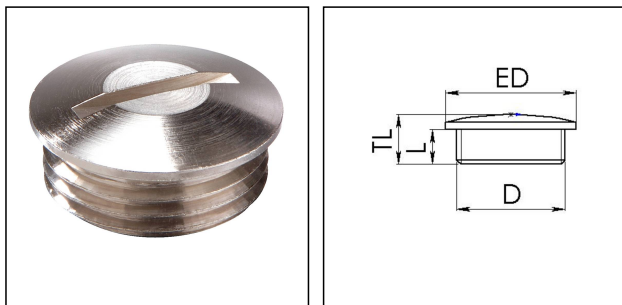


## MVS 13,5

Stop end, brass nickel-plated, Pg13,5



Products may differ in size, colour and appearance to those shown. If you require further information or customisation, please contact us directly.



<b>Material</b>	Brass nickel-plated
<b>Surface</b>	Nickel-plated
<b>Temp. range min</b>	-200 °C
<b>Temp. range max</b>	250 °C
<b>Protection class</b>	IP54
<b>Thread type</b>	PG
<b>Ø Connection thread D</b>	13,5
<b>Length screw-in thread L</b>	6,5 mm
<b>External diameter ED</b>	22 mm
<b>Total length TL</b>	9,5 mm
<b>Advice</b>	with O-ring IP66/IP68
<b>Order no. nickel-plated</b>	10062154
<b>Type</b>	MVS 13,5
<b>Packing unit</b>	100
<b>ETIM-Classification</b>	EC000032

### Recommended accessories

<b>MMU 13,5</b>	10062144
<b>ORD-E PG13,5</b>	10104449

22.05.2021

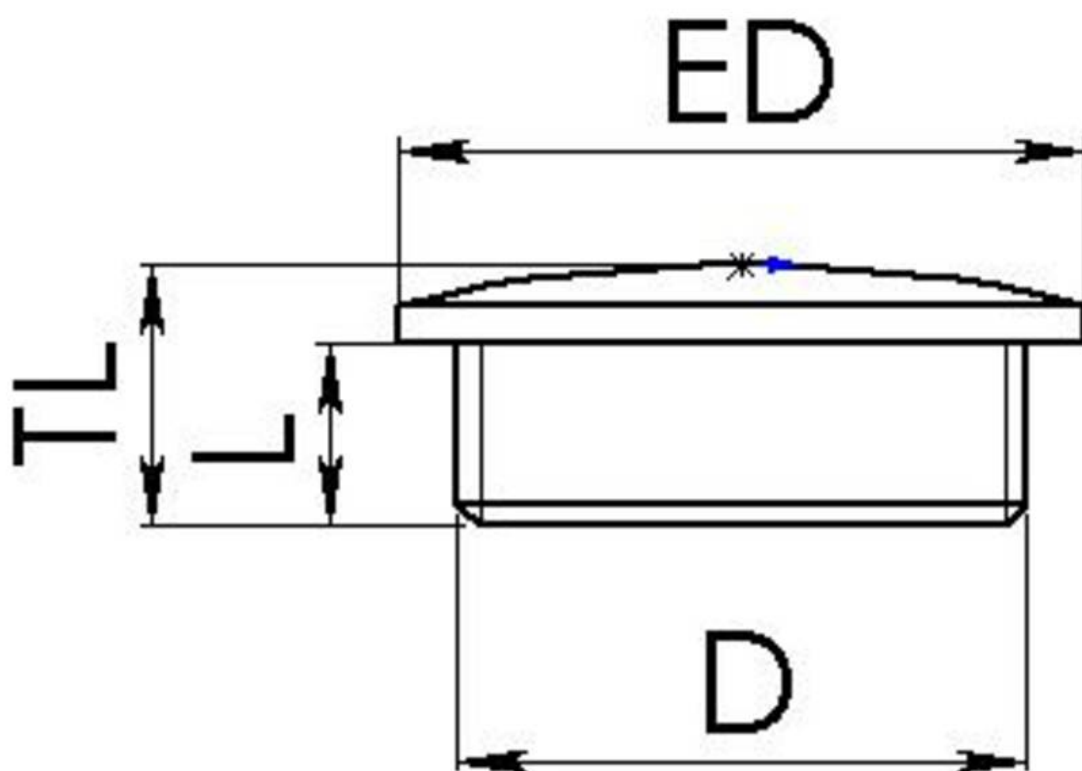
Your Contact:

**WISKA Hoppmann GmbH**

Kisdorfer Weg 28 · 24568 Kaltenkirchen · Germany

☎ +49-4191-508-0 · 📠 +49-4191-508-209

contact@wiska.de · www.wiska.com



Your Contact:

**WISKA Hoppmann GmbH**

Kisdorfer Weg 28 · 24568 Kaltenkirchen · Germany

☎ +49-4191-508-0 · 📠 +49-4191-508-209

contact@wiska.de · www.wiska.com

Other technical data on request / subject to change without notice