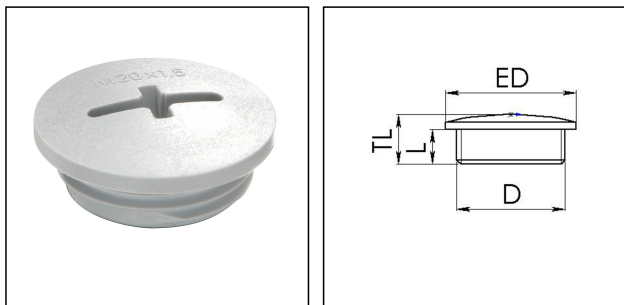


## EVSG 50

Stop end, polyamide, RAL 7035, M50



Products may differ in size, colour and appearance to those shown. If you require further information or customisation, please contact us directly.



<b>Material</b>	Polyamide, fibre reinforced
<b>Temp. range min</b>	-40 °C
<b>Temp. range max</b>	100 °C
<b>Glow wire test</b>	650 °C
<b>Protection class</b>	IP56
<b>Advice</b>	with sealing IP66/IP68
<b>Thread type</b>	M
<b>Ø Connection thread D</b>	50
<b>Lead</b>	1,5
<b>Length screw-in thread L</b>	10 mm
<b>Total length TL</b>	15 mm
<b>External diameter ED</b>	56 mm
<b>Product Color</b>	RAL 7035
<b>Order no. RAL 7035</b>	10060630
<b>Type</b>	EVSG 50
<b>Packing unit</b>	50
<b>ETIM-Classification</b>	EC000032

### Recommended accessories

<b>EMUG 50</b>	10060776
<b>EADR 50</b>	10062807

09.05.2021

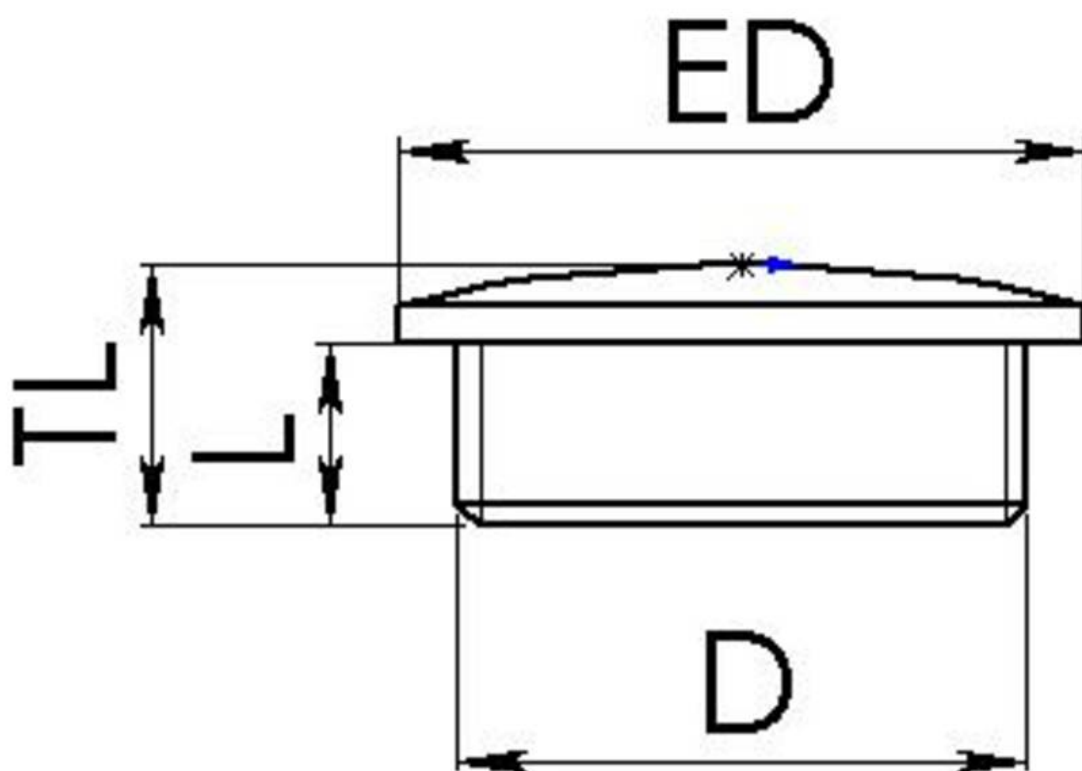
Your Contact:

**WISKA Hoppmann GmbH**

Kisdorfer Weg 28 · 24568 Kaltenkirchen · Germany

☎ +49-4191-508-0 · 📠 +49-4191-508-209

contact@wiska.de · www.wiska.com



Your Contact:

**WISKA Hoppmann GmbH**

Kisdorfer Weg 28 · 24568 Kaltenkirchen · Germany

☎ +49-4191-508-0 · 📠 +49-4191-508-209

contact@wiska.de · www.wiska.com

Other technical data on request / subject to change without notice