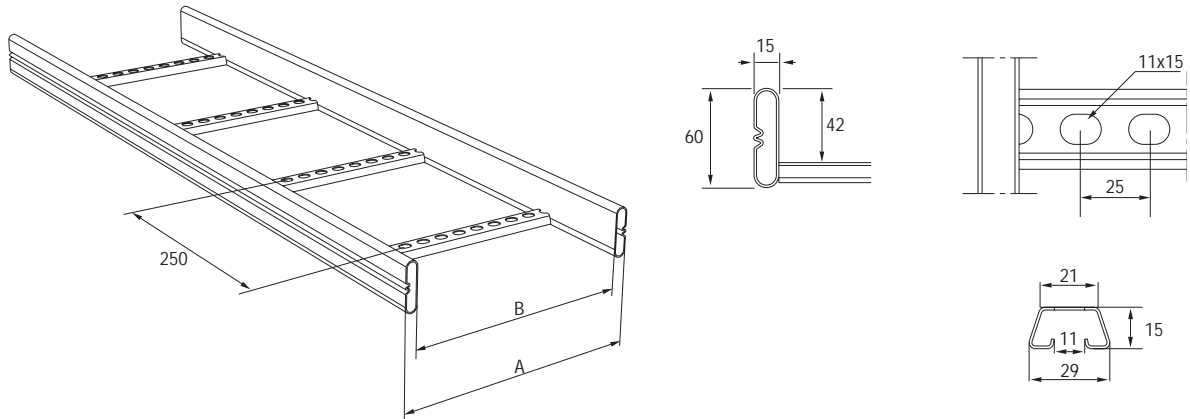


TIKASHYLLY KS80

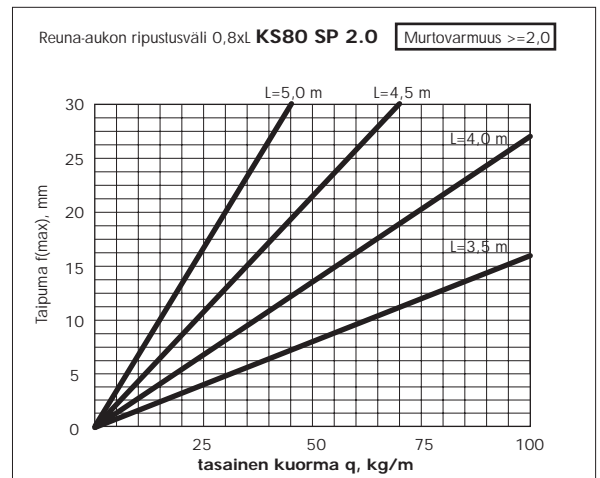
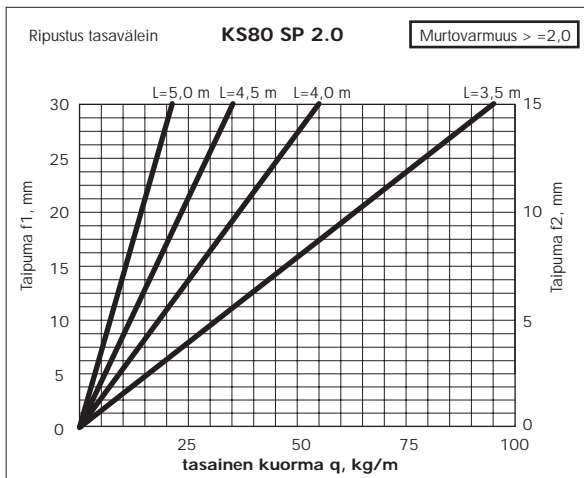
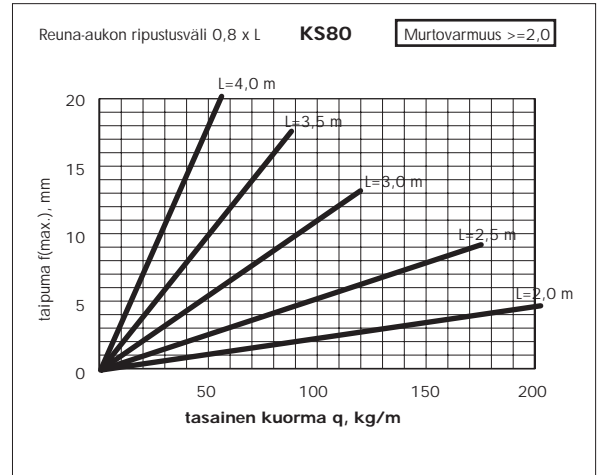
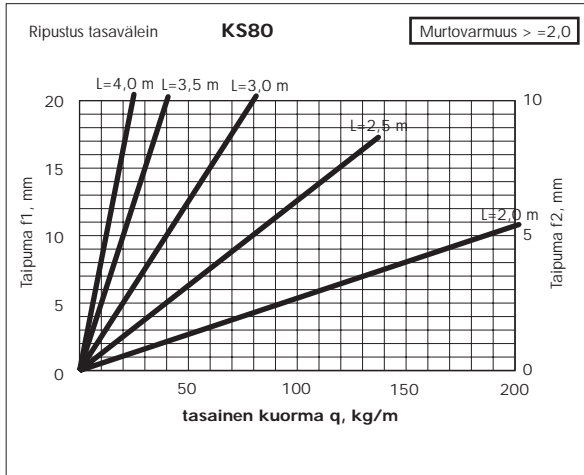
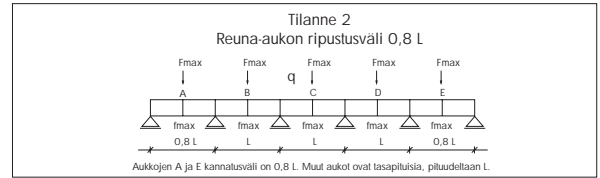
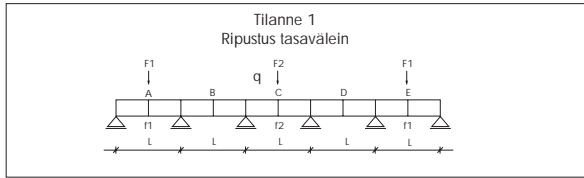


TUOTE	SSTL- NUMERO	VARASTO- PAKKAUS	PAINO KG /100 M	A mm	B mm	PITUUS
Kuumasinkitty valmistuksen jälkeen						
KS80-150	14 495 21	60 m	270	150	120	6 m
KS80-200	14 495 22	60 m	280	200	170	6 m
KS80-300	14 495 23	60 m	300	300	270	6 m
KS80-400	14 495 24	60 m	320	400	370	6 m
KS80-500	14 495 25	60 m	340	500	470	6 m
KS80-600	14 495 26	60 m	360	600	570	6 m
KS80-1000	14 495 30	60 m	450	1000	970	6 m
Kuumasinkitty valmistuksen jälkeen						
KS80-200 SP2.0	14 495 07	60 m	470	200	170	6 m
KS80-300 SP2.0	14 495 08	60 m	490	300	270	6 m
KS80-400 SP2.0	14 495 09	60 m	510	400	370	6 m
KS80-500 SP2.0	14 495 10	60 m	530	500	470	6 m
KS80-600 SP2.0	14 495 11	60 m	550	600	570	6 m
Kuumasinkitty valmistuksen jälkeen						
KS85-150 L=3000	14 494 06	30 m	270	150	120	3 m
KS85-200 L=3000	14 494 07	30 m	280	200	170	3 m
KS85-300 L=3000	14 494 08	30 m	300	300	270	3 m
KS85-400 L=3000	14 494 09	30 m	320	400	370	3 m
KS85-500 L=3000	14 494 10	30 m	340	500	470	3 m
KS85-600 L=3000	14 494 11	30 m	360	600	570	3 m
Kuumasinkitty valmistuksen jälkeen ja maalattu						
PEX KS80-150	14 306 01	60 m	270	150	120	6 m
PEX KS80-200	14 306 02	60 m	280	200	170	6 m
PEX KS80-300	14 306 03	60 m	300	300	270	6 m
PEX KS80-400	14 306 04	60 m	320	400	370	6 m
PEX KS80-500	14 306 05	60 m	340	500	470	6 m
PEX KS80-600	14 306 06	60 m	360	600	570	6 m
PEX KS80-1000	14 306 10	60 m	450	1000	970	6 m

KUORMITUS

Valitse kannatusväli alla olevien kuormituskäyrien avulla.

KUORMITUSKÄYRÄT



Katso kuormituskäyrien lukuohje sivulta 11.